

Progress Begins with You!

Ingersoll Rand is the proud sponsor of the
2013 Region H SWE Conference
February 8 – 10, 2013



TRANE[®]



THERMO KING



Ingersoll Rand is a company where you have the flexibility to find your passion and the support to help you follow it. We are dedicated to hiring motivated professionals looking to drive innovation.

With 1,000 members of the Ingersoll Rand Women's Network and counting, our areas of focus are professional development, business development, recruiting and community relations for women working for Ingersoll Rand.

Now hiring Engineers for Full-Time and Internship roles within Operations/Manufacturing, Design Engineering and Sales Engineering. To learn more about Ingersoll Rand and our career opportunities, visit us at www.IngersollRand.com/careers.





Welcome to

MINNEAPOLIS

The University of Minnesota – Twin Cities’ Society of Women Engineers (SWE) section is proud to present the 2013 SWE Region H Conference. We would like to extend a warm welcome to all of our attendees, volunteers, speakers, and sponsors.

The theme of this year’s conference, *Create Your World: Engineering Your Future With SWE*, emphasizes building your career, seizing opportunities, and achieving your dreams through SWE. By motivating thousands of aspiring and thriving women engineers, SWE provides all of us a chance to engineer our futures: to accomplish professional goals and to light a path for new scientists and engineers across the globe.

Throughout the weekend, programming will revolve around creating the best you, building the foundation for a flourishing career, and forging a future for yourself in a big world. Networking activities, versatile breakout sessions, specialized tours, and a career fair will enrich you and your SWE section by outlining key tools for personal and group success.

This event would not have been possible without the help and dedication of our many members and mentors. Thank you to our incredible Conference Planning Committee and our SWE Regional Planning Team. Special thanks also goes out to our University of Minnesota – Twin Cities’ professional mentors Melissa Stiegler and Charlene Willenbring.

Additionally, we would like to thank the University of Minnesota College of Science and Engineering, Susan Kubitschek, and Joslyn Biever for their support, and our amazing volunteers and speakers for their time and enthusiasm this weekend. Finally, we would like extend our deepest thanks to our generous sponsors who truly helped make this event a success.

We hope you enjoy your time at the 2013 SWE Region H Conference in Minneapolis. We will be available throughout the weekend to answer any questions you may have. Please let us know if there is anything we can do to make your stay more enjoyable.

Amie Lijewski
Jess Springer
Conference Committee Co-Chairs
University of Minnesota – Twin Cities



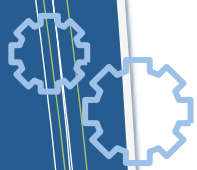


Table of **C**ontents

Friday and Sunday Schedule.....	pg. 1
Saturday Schedule.....	pg. 2
Friday Night Activities.....	pg. 3
Saturday Night Activities.....	pg. 4
Continuing Education Unit.....	pg. 5
Keynote Speaker.....	pg. 6
Professional Session.....	pg. 7
Collegiate Session.....	pg. 11
Session One.....	pg. 18
Session Two.....	pg. 22
Session Three.....	pg. 26
Session Four.....	pg. 30
Networking Lunch.....	pg. 34
Career Fair.....	pg. 35
Tours.....	pg. 37
The Commons Hotel Map.....	pg. 39
STSS Maps.....	pg. 39
Coffman Memorial Union Maps.....	pg. 42

Table of Contents

Breakout Sessions

- **Professional Session | 9:30-10:20 AM**
 - ◇ “Managing Generations in the Workplace”pg. 7
 - ◇ “Resume Writing and Job Searching for the Experienced Professional”pg. 8
 - ◇ “Transitioning into Management”pg. 8
 - ◇ “Women in Negotiation: How to Ask for What you Want”pg. 10
- **Collegiate Session | 10:30-11:20 AM**
 - ◇ “Ace Your Interview”pg. 11
 - ◇ “Building Your Best Resume”pg. 11
 - ◇ “Cooking Healthfully on a College Budget”pg. 11
 - ◇ “Marketing YOU”pg. 12
 - ◇ “Getting the “Edge”: How to Open Doors at Corporations and Successfully Transition From Academia to Industry”pg. 13
 - ◇ “Grad School – Finding Funding”pg. 15
 - ◇ “Other Career Options for Engineers”pg. 15
 - ◇ “What Should I Take Away From my Internship/Research Experience?”pg. 16
 - ◇ “Where Do I Go Now: Graduate School or Industry?”pg. 16
 - ◇ “Who Is In My Network and How Can They Help Me?”pg. 17
- **Session 1 | 11:35 AM-12:25 PM**
 - ◇ “Being a Professional”pg. 18
 - ◇ “Engineering the Mall of America: No Heat in February?”pg. 18
 - ◇ “How to Live a Life of Nutrition and Wellness”pg. 18
 - ◇ “Maintaining Membership”pg. 18
 - ◇ “Marketing Your Non-Engineering Skills”pg. 19
 - ◇ “Media and Publicity”pg. 19
 - ◇ “Mentoring: The Importance of Relationships”pg. 20
 - ◇ “Out Of Overwhelm: Stress Relief with EFT Meridian Tapping”pg. 20
 - ◇ “Rotational Programs: Pros/Cons and How to be Successful”pg. 21
 - ◇ “STEM: What it is and How I Can Help”pg. 21
- **Session 2 | 1:45-2:35 PM**
 - ◇ “Balancing Section Finances”pg. 22
 - ◇ “Green Engineering – The Future”pg. 22
 - ◇ “Going Back For an MBA: Is It Worth It?”pg. 22
 - ◇ “Harnessing the Mississippi River”pg. 22
 - ◇ “How Can SWE Help Me?”pg. 23
 - ◇ “Professional Style Tips to Look Your Best”pg. 23
 - ◇ “SWE Leadership Positions”pg. 24
 - ◇ “Succeeding in a Contingency Construction Environment”pg. 24
 - ◇ “Women in Management”pg. 25
 - ◇ “Work/Life Balance”pg. 25
- **Session 3 | 2:50-3:40 PM**
 - ◇ “Asserting Yourself in a Male-Dominated Profession”pg. 26
 - ◇ “Be a Person of Influence”pg. 26
 - ◇ “Ins and Outs of Hosting a Regional Conference”pg. 27
 - ◇ “Maintaining the Metrodome: How Did It Cave In?”pg. 27
 - ◇ “Patents: An Engineer’s Perspective”pg. 28
 - ◇ “Steps to Success for SWE Members after Graduation”pg. 28
 - ◇ “Taking Charge of Your Success, Growth, and Career Development”pg. 28
 - ◇ “Yoga and Stretching for the Busy Woman”pg. 29
- **Session 4 | 3:55-4:45 PM**
 - ◇ “35W Bridge Collapse: Summary of Investigation Conclusions”pg. 30
 - ◇ “Etiquette (Snack)”pg. 30
 - ◇ “How to Organize Your Desk, Your Life, and Your Information”pg. 30
 - ◇ “International Engineering”pg. 31
 - ◇ “Planning for Your Financial Future, What Every Woman Needs to Know”pg. 31
 - ◇ “Resolving Conflicts”pg. 32
 - ◇ “SWE Counselors and Mentorship”pg. 32
 - ◇ “SWE’s Outreach Opportunities”pg. 33
 - ◇ “Walk In Q&A Coaching”pg. 33



Friday and Sunday Schedule

Friday

<u>TIME</u>	<u>EVENT</u>
12:00 – 11:00 PM	Conference registration at The Commons Hotel
1:00 – 5:00 PM	Continuing Education Unit (CEU) course in Inventor One at The Commons Hotel
3:00 – 5:00 PM	Medtronic manufacturing plant tour
6:00 – 7:00 PM	Collegiate transition party in Pathways at The Commons Hotel
7:00 – 11:00 PM	Registrant reception in the Pinnacle Ballroom at The Commons Hotel
9:00 – 10:00 PM	Presidents meeting in the Pathways Room at The Commons Hotel

Sunday

<u>TIME</u>	<u>EVENT</u>
7:00 – 11:00 AM	Breakfast in the Meridian Ballroom at The Commons Hotel



**QUESTIONS?
CONCERNS?
DIRECTIONS?**

Please go to the **registration and help desk** at the top of the elevators on the second floor of **The Commons Hotel**

Saturday Schedule

Saturday

<u>TIME</u>	<u>EVENT</u>
7:30 AM	Breakfast buffet opens in the Meridian, Pathways, and Pinnacle Ballrooms at The Commons Hotel*
8:00 – 8:20 AM	Welcome breakfast and State of SWE Address
8:20 – 9:10 AM	Joint meeting and bid presentations
9:20 – 10:10 AM	Collegiate meeting in the Meridian and Pinnacle Ballrooms at The Commons Hotel
9:30 – 10:20 AM	Professional session in the Science Teach and Student Services building (STSS)
10:30 – 11:20 AM	Collegiate session in STSS Professional meeting in STSS
11:35 AM – 12:25 PM	Session one in STSS
12:30 – 1:30 PM	Networking lunch in STSS
1:45 – 2:35 PM	Session two in STSS
1:45 – 3:55 PM	Ecolab Research and Development Center tour
1:45 – 5:00 PM	Sponsor career fair in Coffman Memorial Union
2:40 – 4:30 PM	Civil Engineering Building tour TCF Bank Stadium tour Visible Heart Lab tour
2:50 – 3:40 PM	Session three in STSS
3:55 – 4:45 PM	Session four in STSS
6:30 – 8:30 PM	Dinner and keynote speaker in the Meridian, Pathways, and Pinnacle Ballrooms at The Commons Hotel*
8:30 – 11:00 PM	Evening entertainment

***CONFUSED ABOUT WHICH ROOM YOU WILL BE DINING IN?
Your nametag color determines where you will eat!**

Meridian Ballroom
(blue)

Pinnacle Ballroom
(green)

Pathways Room
(red)





Evening **A**ctivities: **F**riday

College Transition Party **Pathways Room at The Commons Hotel** **6 - 7 PM**

Are you going to be a graduating senior this spring? Interested in staying involved with SWE at a professional level? Please join the SWE-MN section President Holly Kimball who will be answering questions about the transition into the professional level of SWE in Region H. SWE- Region H will also be giving away several FREE professional memberships! Do not miss your chance to stay even more involved with SWE and network with several professionals. Light appetizers and drinks will be served at this event.

Registrant Reception **Pinnacle Ballroom at The Commons Hotel** **7 - 11 PM**

The conference will be showcasing one of the largest events that happens in Minnesota each year, The Minnesota State Fair! The Commons Hotel will be serving some delicious snacks that are found at the annual Minnesota State Fair. Along with enjoying some Minnesota comfort food, feel free to mingle, network and play State Fair games with some of our sponsors! Games such as bowling, basketball shoot, bean bag toss and Plinko will be hosted by companies offering various small prizes to the winners.

Presidents Meeting **Pathways Room at The Commons Hotel** **9 - 10 PM**

A meeting for the collegiate section presidents to network and share best practices.

Evening **A**ctivities: **S**aturday

Goldy's Gameroom

**Goldy's Gameroom in Coffman Memorial Union
Basement
9 pm - 11 PM**

Check out Goldy's Gameroom in Coffman Memorial Union located only four blocks from The Commons Hotel. Play a round of billiards with friends, reach your highest score on the arcade games, or get that last spare with a free round of bowling.

Board Game Tournament

**Pathways Room at The Commons Hotel
9 pm - 11 PM**

Miss playing those old childhood games like Chutes and Ladders, Candyland and Guess Who? Gather your friends, stay in at The Commons Hotel and challenge a neighboring section to a board game!

A Night on the (Dinky)town

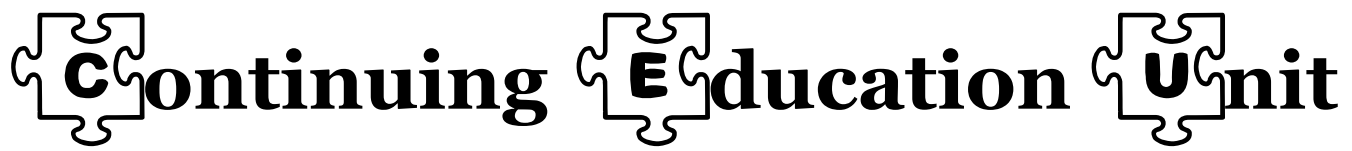
**Dinkytown
8:30 PM - ?
(Just be sure to get enough sleep!)**

Dinkytown may appear to be just that, but with some exploration, you will find it is anything but. Get great drink specials at Sally's Saloon and Eatery, for those 21+, cool down with some froyo at Chilly Billy's, engineer your creativity at the Weisman Art Museum, or explore Dinkytown's other restaurants, bars, and electrifying campus life.

(www.dinkytownminneapolis.com)

If staying in the comfort of The Commons Hotel is more your style, be sure to check out their in-hotel restaurant, Beacon Public House, for fabulous drinks and cocktails.





Continuing **E**ducation **U**nit

“Project Management and Chaos Theory”

Friday, February 8th

The Commons Hotel

Inventor One

1 - 5 PM

The Continuing Education Unit (CEU) session is for professional SWE members looking to receive credit for a continuing education course.

The unit will be taught by the College of Continuing Education (CCE) at the University of Minnesota – Twin Cities. CCE has been “opening doors for those looking for distinctive learning opportunities for professional and personal growth” for 100 years.



Robert J. Monson, PhD

Bob has over 20 years experience managing projects in all types of industries. He has been teaching since 1992 and is the author of several articles and presentations in the project management area. Bob received his PhD in Industrial Engineering at the University of Minnesota with a specialization in the area of Project Management and Psychology. He also has a Bachelor of Science in Mechanical Engineering degree from the University of Minnesota, College of Science and Engineering, formerly Institute of Technology, and a Master of Science in Manufacturing Systems Engineering from the University of St. Thomas. Bob has been teaching for the College of Continuing Education for the past seven years.

By participating in this unique session, you will learn how to:

- ✧ Understand complex systems and chaos and how they manifest in your organization
- ✧ Recognize emergent behavior in the organization
- ✧ Identify where and when chaos is likely to occur
- ✧ Develop risk mitigation schemes for your work
- ✧ Manage your work and life within the chaotic environment
- ✧ Recognize and avoid common problems caused by chaos

Keynote Speaker

Dr. Donna Starrup Bossman Materials and Mechanics Technology Leader Ingersoll Rand



Dr. Bossman leads the Materials Engineering and Computational Mechanics Engineering teams for the Trane Commercial and ThermoKing HVAC business units within Ingersoll Rand. She and her teams are widely recognized within the company as subject matter experts and key contributors on a variety of complicated technical issues. Her engineering teams have a marked impact on product development and are often leveraged globally and across all Ingersoll Rand product lines. Ingersoll Rand is a \$14 billion diversified global leader committed to creating and sustaining safe, comfortable and efficient environments.

Her technical expertise is in the area of plastics engineering and materials chemistry. She holds a BS from Auburn University and PhD in Materials Chemistry and Polymer Science at the University of Minnesota. Her experience includes working in the area of particle filtration in the semiconductor field, surface modification of plastics for medical implant applications, plastics product and process development for the automotive and consumer markets, and plastics application development within the HVAC industry. While pursuing her PhD under the direction of Wayne Gladfelter and Greg Haugstad at the University of Minnesota, she developed environmentally controlled scanning probe microscopy methods for a variety of applications.

She has held roles of increasing leadership responsibility while at Ingersoll Rand, and has been a charter corporate member of the Ingersoll Rand Women's Network. She has been involved with efforts to increase technical outreach within her local community, as well as contributing to broader efforts and partnerships such as SWE to increase the attraction, development and retention of diverse technical talent, including women engineers. She is a recent recipient of the first annual STEP Awards, sponsored by the Manufacturing Institute and partners, which recognizes women who have demonstrated excellence in the Science, Technology, Engineering and Production (STEP) fields within the manufacturing sector.



Professional **S**ession | 9:30 - 10:20 AM

Managing Generations in the Workplace

Vanessa Stuart, Betty Leonhard, Enanga D.

Fale

STSS 131B

Being able to work with people of all ages is a skill that is essential in every work environment. To succeed in any company, it is important to bridge the gap between the years to achieve success in projects and professional relationships. Learn how to communicate and relate with people of every generation.

Biographies:

Vanessa Stuart is a Manufacturing Engineering Associate at General Mills – Yoplait, in Reed City, MI. She is a recent graduate of Michigan State University, where she received a BS in Chemical Engineering, with a concentration in Food Science. This is Vanessa's first year as a Region H Collegiate Leadership Coach, and she has enjoyed every minute of it. Outside of work and SWE, Vanessa enjoys snowboarding, kayaking, and hiking.

Betty Leonhard has been a dedicated member of SWE for over a decade and a member of its leadership coaching committee since 2006. Her passion for SWE got its start when she got involved with the (then proposed) ECI section shortly after graduating from UW-Platteville and has been thoroughly involved ever since. Betty has served Region H as Lt. Governor, Secretary, and Alternate Senator. She was a Section President, Vice President, and Section Representative at both the ECI section and the WI section. She has been active on the Society's bylaws committee since FY05. Betty works as a Quality Engineer at Ameridrives Power Transmission. She has also worked at Marion Body Works, Oshkosh Corp., Mercury Marine, John Deere, Thermo King, and Square D since graduating with a BS in Industrial Engineering in 2000. Her career experience includes quality and manufacturing engineering roles. Betty is an ASQ Certified Quality Engineer. Through her volunteer work and her "paid" career, Betty has worked for, with, and managed people of every generation. She has learned a few things



THOMSON REUTERS **WE'RE BUILT ON** **TECHNOLOGY**

At Thomson Reuters, we have built our business on a global scale and with an emphasis on technological innovation. Our focus is on delivering crucial information, tools, software, and services to professionals across industries.

Our Eagan, Minnesota campus is home to more than 7,000 employees, 1,800 of whom are technologists.

Find out more at thomsonreuters.com



Professional **S**ession | 9:30 - 10:20 AM

along the way and will be sharing them in this presentation.

Enanga Fale works at United Technologies Corporation – UTC Aerospace Systems (UTAS) as a Staff Engineer (Systems) in the Electric Systems Business Unit. As a Staff Systems Engineer, Enanga supports efforts to construct electrical communication systems for aircraft and serves as an active member in industry standards' organizations. She also creates and supports business unit process initiatives in risk management, project management, professional development, and recruitment.

Enanga's engineering education started at St. Cloud State University in St. Cloud, MN, where she received a Bachelor of Science in Electrical Engineering with a focus on Aviation Operations. She also holds a master's degree in Systems Engineering from Iowa State University with a certificate in Human Computer Interaction. She also studied Aviation Safety at Embry Riddle University.

Throughout her education and professional career, Enanga relishes opportunities to drive technological advancement and support of STEM initiatives, which started at St. Cloud State University. At St. Cloud State University, Enanga lead the university SWE Chapter in Outreach Initiatives and supported community development through the SCSU Women's Center. She continued into her professional career supporting SWE through the East Central Iowa Chapter (SWE-ECI) as Secretary, Outreach Director, Vice President, and President. Under her leadership SWE-ECI instituted First Iowa SWE Conference – Planting Seeds of Success, which is now a annual program focusing on uniting Iowans to leverage professional development opportunities for engineering professionals. She is currently in a number of SWE

Committees and a SWE Region H Leadership Coach.

External to SWE, she has also been a speaker on education and career development with community organizations in St. Cloud, MN and Cedar Rapids, IA. She serves as an adjunct instructor in electronics and computers for Engineering Technologist and Technician Programs. In her free time, Enanga enjoys time with her family, traveling, painting, photography, hiking, biking, and reading.

Resume Writing and Job Searching for the Experienced Professional

Barry Cordero

STSS 121

Rules change when your job and life experience grow. No longer does your resume have a one page limit, your numerous projects may take more than just a few minutes in an interview to explain, and sorting through titles like "assistant" and "intern" when job hunting may be a bit tedious for distinguished professionals. This session explores how to find a career that fits your skills, how to sell your skills and experience and how to land the job you really want.

Biography:

Barry Cordero is the National Vice President for the Society of Hispanic Professional Engineers as well as a Principal Project Engineer for Medtronic. As a US Navy Veteran and a SHPE leader, Barry has excelled at converting his 15 years of unique experience into career usable skills in the workplace.

Transitioning into Management

Allison Pedersen

STSS 131A

Are you interested in or have you recently moved into a management role within your organization? If you are interested in getting tips and tricks on handling the challenges



Professional **S**ession | 9:30 - 10:20 AM

related to transitioning into a management role, building a strong team, and being successful in your first management role, this session is for you.

Biography:

Allison Pedersen is an Engineering Manager within the Air Data Systems Center of Excellence at United Technologies (UTC) Aerospace Systems. In this role, Allison is responsible for the software team which focuses on software design, modeling, and certification support for multiple projects. She has worked at UTC Aerospace Systems for 14 years starting out as a technical contributor, so she will reflect on her experiences of moving up in the company, while continuing to work in the same department. Allison has also been an active SWE member for 18 years. Since graduating from the University of North Dakota with a Bachelor of Science in Electrical Engineering, Allison has been active in the SWE-Minnesota section, where she has held numerous positions on the Executive Council and also has been a member of the SWE-MN Outreach Committee for several years. She has also held several national positions, including SWE Outreach Committee Chair and her current position of SWE Curriculum Committee Chair.

Allison will also focus on how her leadership experiences within SWE have helped her professional growth.



Current and former Society of Women Engineers section presidents

"When Caterpillar prepares to introduce a new product, it's a big deal. It takes the combined efforts of hundreds of people from all around the company, working together to design, develop, manufacture, deliver and support the best products in the industry. I'm responsible for one piece of that big puzzle, but I influence many others. My experience with SWE has helped to prepare me to lead by example, whether or not I lead by position. It's the kind of experience that all leaders should have."



caterpillar.com/careers

© 2013 Caterpillar. All Rights Reserved. CAT, CATERPILLAR, their respective logos, "Caterpillar Yellow" and the "Power Edge" trade dress, as well as corporate and product identity used herein, are trademarks of Caterpillar and may not be used without permission.

CATERPILLAR®

Professional **S**ession | 9:30 - 10:20 AM

Women in Negotiation: How to Ask for What you Want

Janet Polach, PhD
STSS 114

Some women never ask for anything they want, whether it be a raise in salary to a different project. Learn about how to find your voice and take initiative in standing up for what you want.

Biography:

Janet Polach possesses over 20 years helping clients improve their organizational

performance by leveraging people. She has assisted organizations to develop leaders and their leadership pipeline, prepare for and manage change, and has helped teams work more effectively to reach their business objectives. She has taught leadership, organizational behavior and research methods at the undergraduate and graduate levels. Janet is a retired Marine.

START THINKING AHEAD.

START RAISING YOUR EXPECTATIONS.

START ABOVE THE REST.

START BECOMING A LEADER.

START RISING TO THE OCCASION.

START REACHING YOUR GOALS.

START STRONG.SM

There's strong. Then there's Army Strong. If you want to be a leader in life, joining the Army ROTC is the strongest way to start. It provides hands-on leadership development. Plus you have the opportunity to compete for a full-tuition scholarship. After graduation, you'll begin your career as an Officer. With a start like that, there's no limit to what you can achieve.

ARMY ROTC

U.S. ARMY

ARMY STRONG:

Welcome Society of Women Engineers
For more Information concerning Army ROTC visit our booth, or
On the Web: goarmy.com/rotc/swe

©2008. Paid for by the United States Army. All rights reserved.



Collegiate **S**ession | 10:30 - 11:20 AM

Ace Your Interview

Amy Hammar

STSS 312

In this session, work on your interviewing skills to stand out from others. Explore common questions and answers and prepare to wow companies with interpersonal enthusiasm.

Biography:

Amy Hammar works in Engineering Talent Pipeline at Caterpillar Inc. focused on strategic projects aligned with US engineering recruitment. Amy's focus is providing and implementing strategy to create the best in class engineering recruiting processes. Amy is also an engineering recruiter for Caterpillar Inc. and assists in STEM talent pipeline activities. Amy has been a professional member of the Central Illinois-SWE section since 2000 and has served as Communication Chair and Section Awards Chair. Amy is currently the CI-SWE FY13 President. Amy is active in youth activities as an assistant youth soccer, flag football, and basketball coach. Amy is married to Jeremy and has two step-children: Sara (17), Caleb (15) in addition to Bryce (8) and Marianne (5).

Building Your Best Resume

Nikki Weber-Knutson

STSS 144

Your resume is the key way companies get to know you and your strengths. Find out more about what companies think make resumes stand out and how to make yours the most distinctive and exceptional in the stack. With three years in recruiting, Nikki Weber-Knutson has reviewed 1000's of resumes and she is excited to help you make your resume stand out!

Biography:

Nikki Weber-Knutson is a Professional Employment Representative with Hormel Foods, based out of Hormel's Corporate Office in Austin, MN. Nikki does college campus recruiting for entry level hires and interns for the operations side of the business. She graduated from Concordia University in St. Paul, MN with a degree in Organizational Management. She has been with Hormel for 12 years and started her career in operations as a Production Supervisor in the Austin, MN plant.

Cooking Healthfully on a College Budget

Robynn Jensen, Rachel Frakie

STSS 330

Most college students fear the dreaded freshmen 15. Learn how to eat healthy by cooking food for yourself, but still spending for a college budget.

Biographies:

Robynn Jensen is a Senior Electrical Design Engineer at Seagate where she has worked for five years. She has her Electrical Engineering degree from Johns Hopkins University. Prior to working for Seagate, Robynn was a Systems Engineer at NASA's Goddard Space Flight



MAKING THE WORLD CLEANER, SAFER AND HEALTHIER

Ecolab is the global leader in water, hygiene and energy technologies and services. Around the world, businesses in the foodservice, food processing, hospitality, healthcare, industrial, and oil and gas markets choose Ecolab products and services to keep their environments clean and safe, operate efficiently and achieve sustainability goals.

As a trusted partner for customers in more than 1 million locations, we provide consistent world-class service across the globe. We meet the challenges of our evolving world with expertise and innovation. We touch what is fundamental to quality of life: clean water, safe food, abundant energy and healthy environments.

ECOLAB

Everywhere It Matters.™

©2013 Ecolab USA Inc. All rights reserved. 01/13

Collegiate **S**ession | 10:30 - 11:20 AM

Center. Cooking at her house is a family affair where she, her daughter and her husband experiment daily with new flavors inspired by their travels – both in real life, and through books and cooking shows.

Rachel Frakie is a Process Development Engineer. She has a degree in Materials Science and Engineering from the U of M (2010) and has been working at Seagate for just over two years. She is an avid lover of food and considers cooking one of her hobbies.

Marketing YOU

Maggie Tomas, Mackenzie Sullivan
STSS 118

Effectively marketing yourself is one of the most fundamental and important skills of any job search. It is important to know who you are as well as the companies to whom you are

selling yourself. We will discuss how to “brand” yourself to future employers and how to effectively communicate your message to recruiters, alumni and others you meet throughout your job search process.

Biographies:

Maggie Tomas is an Associate Director and Career Coach at the Carlson School of Management, University of Minnesota. Born and raised in Southern California, Maggie moved to the Twin Cities in 2010. Her background includes teaching and career counseling at the college level, namely at the University of St. Thomas, University of California Santa Barbara (UCSB), and Brooks Institute, a well-known film, photography, and design school where she served as Director of Career & Student Services. Maggie holds a BA in Liberal Studies and a MA in Psychology with an emphasis in Career Counseling and Professional Development. She is also a regular contributor to the Women of HR blog.

Mackenzie Sullivan is an Associate Director and Career Coach at the Carlson School of Management, University of Minnesota. Mackenzie does career coaching and programming for all master’s students, and directs programming for international and CEMBA students. Prior to joining the GBCC, Mackenzie held a coaching position with the Undergraduate Business Career Center at Carlson. Mackenzie enjoys working with students on career exploration, and also enjoys working with students interested in the nonprofit, CRS/sustainability, and government sectors. Mackenzie serves as an adviser to the grad and undergrad chapters of Net Impact, works on the Career Development Network’s Diversity Committee, and is a board member of the Minnesota Career Development Association.

See yourself succeeding ... Our Way

At Hormel Foods, you'll find a level of challenge and opportunity you can't find anywhere else.



www.hormelfoods.com/careers



C Collegiate S Session | 10:30 - 11:20 AM

She has her BA in psychology from Oberlin College, her MA in Public Affairs from the U's Humphrey Institute, and is certified as a Global Career Development Facilitator.

Getting the "Edge": How to Open Doors at Corporations and Successfully Transition From Academia to Industry

Jessica Sheehan, Jennifer Krohn, Tricia Walker, Holly Kimball, Whitney Giga
STSS 412

Fresh out of college, there are many strategies that can assist you to land the right job and help you make a successful transition from academia to being a contributor in an organization. During the first part of this panel discussion, you will hear from engineering personnel and corporate recruiters on how you can make the best first impression from your resume to your public social media profile. This group will discuss what they look for in resumes and what

a cover letter does (or does not do) for your application. How do industry contacts use social media like LinkedIn, Facebook and Twitter for networking purposes? Insights on how to have a proper online presence and ensuring prompt and permissible follow up practices as well as how you can utilize social media to help open doors at organizations will be shared. The second part of the discussion will focus on effectively managing the challenging transition from an academic environment to a competitive work culture. Hear from the panel about their experiences, what the transition from academia to industry entailed for them and tips for enabling success in the transition.

Biographies:

Jessica Sheehan, a recent graduate from the University of Minnesota Duluth, graduated with a degree in Chemical Engineering. She is a brand new graduate and is currently working



Some of Our Most SUCCESSFUL EMPLOYEES Are in Diapers.

Others are in toothpaste, laundry detergent, razors, shampoo, paper towels, batteries, you name it. As a P&G employee, you'll have the exciting opportunity to develop or support some of the most well known brands in the world. And because we're more interested in you than the position you hold, you'll have every opportunity to go to new brands, projects and departments base on your skills and interests.

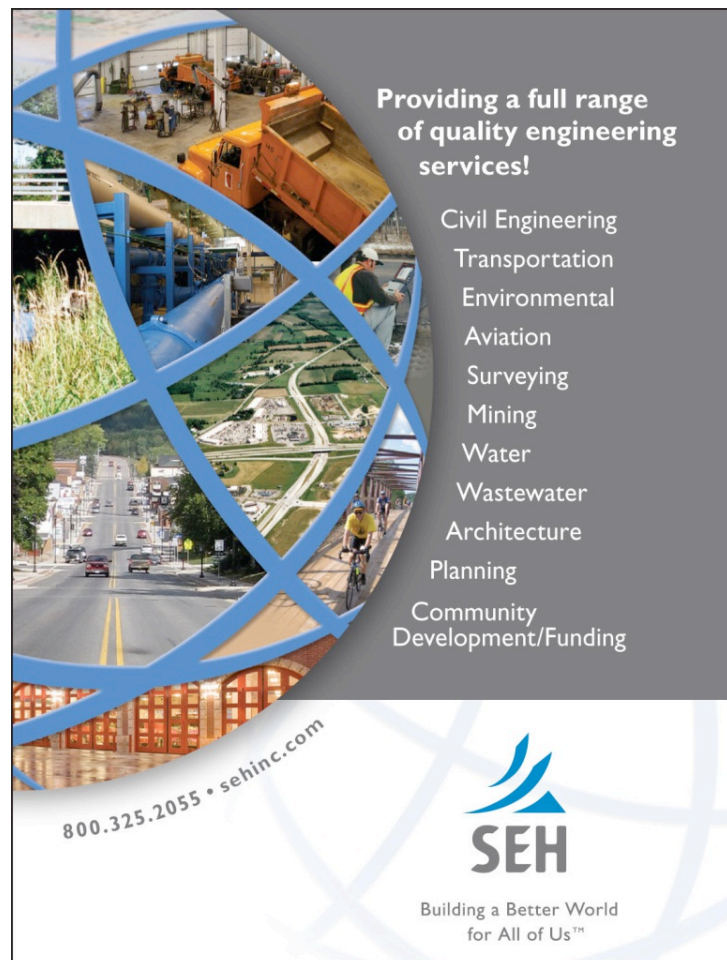
P&G is also a "build from within" organization, which means over 90% of our people start at an entry level. This creates even more opportunities to advance, while also creating a great camaraderie among our employees, many of who came up the ranks together.

Visit us at the career fair on Saturday, February 9th.

Apply online at [US.experiencePG.com!](http://US.experiencePG.com)

A NEW CHALLENGE EVERY DAY.
Daily. Globally. Personally. Professionally.

P&G
Procter & Gamble is an Equal Opportunity Employer.



Providing a full range of quality engineering services!

- Civil Engineering
- Transportation
- Environmental
- Aviation
- Surveying
- Mining
- Water
- Wastewater
- Architecture
- Planning
- Community Development/Funding

800.325.2055 • sehinc.com

SEH
Building a Better World for All of Us™

Collegiate Session | 10:30 - 11:20 AM

as an Associate Manufacturing Engineer for Medtronic in the Operations Department of Neuromodulation. She had three summer internships within this same department. Jessica was a part of Medtronic Campus Programs and participated in the activities that Medtronic set up for them including Luncheons with Leaders and she chaired their College Night Event as well. Jessica is excited to be part of Medtronic to help carry out their mission each and every day.

Jennifer Krohn is a Firmware Verification Engineer for Medtronic's Neuromodulation division. She came to Medtronic a year ago after graduating with her Master's Degree in Electrical Engineering from the University of Minnesota – Twin Cities. At Medtronic, she is currently working on Mircrostim where she is developing a test program and tools for verification of the Microstimulator firmware. Jennifer is actively involved in Medtronic's SWEnet Twin Cities council as Networking and Onboarding Lead.

Tricia Walker is a Senior Supplier Quality Engineer at Medtronic for their Cardiac and Vascular Group (CVG). She is accountable for the quality of one of CVG's largest contract manufacturers of Cannulae and Beating Heart product families. She joined Medtronic two years ago and prior to that worked in the medical device industry in varying capacities. Tricia has vast experience in product development, project management, manufacturing, packaging and quality of cardiovascular medical devices. She has a Bachelor of Science degree from Iowa State University in Engineering Science and a Master's Degree from the University of Iowa in Biomedical Engineering. Tricia has been very active in SWE locally, regionally and nationally for the last 15 years and currently serves as Medtronic SWEnet Twin Cities Professional

Development Chair.

Holly Kimball is a Principle Supplier Continuity Engineer at Medtronic CRDM. Holly began her career with a two year in Laser Electro Optics Engineering Technology and later completed her Bachelor of Science in Mechanical Engineering at the University of St. Thomas. She has been in many industries over the last 15 years including optics, telecomm, disk drive and medical device. She has spent the last ten years with Medtronic in CRDM, Neuromodulation and Spinal. Holly has also been active in the community and is the current Society of Women Engineers Minnesota President and has been active in the local section since 2006.

Whitney Giga is a Principal Talent Acquisition Specialist at Medtronic in Minneapolis. She has been recruiting for almost nine years, with a stint as a headhunter before getting into the Corporate Recruiting space. In her seven years at Medtronic, she has hired for virtually every job function at Medtronic, but has spent most of her time recruiting for scientific, technical and PMO functions. She is passionate about ensuring the organization and candidate have the "right fit" to ensure business results, as well as aligning progressive recruiting tools and technology to business sourcing goals and strategies. She is part of the panel because she helped design Medtronic's social media recruiting strategy and is a self-proclaimed LinkedIn "evangelist." She has spoken to other corporate recruiting teams about how to incorporate social media use easily and strategically into their recruitment strategy. Whitney is active on Twitter and has over 2,600 direct connections and 15,319,000 in her searchable LinkedIn network and she can share how recruiters use these tools to find/research talent and offer best practices on how to get noticed.





Collegiate **S**ession | 10:30 - 11:20 AM

Grad School – Finding Funding

Kaitlyn Bunker, Elizabeth Gregory, Heather Wiest, Yang Yang
STSS 123

One of the most important concerns of current and future graduate students is how they are going to pay for post-baccalaureate education. This session is meant to discuss some of the opportunities available for graduate studies in engineering and related fields. These opportunities include traditional sources such as teaching assistantships, research assistantships, and grants from the National Science Foundation (NSF); as well as more non-traditional sources such as private foundations or professional societies.

Biographies:

Kaitlyn Bunker is a PhD candidate in Electrical Engineering at Michigan Technological University. She received her BS (2010) and MS (2012) degrees, also in Electrical Engineering, from Michigan Tech. Her current research focuses on power electronics and electric machines, and their applications with renewable energy technology. She is studying as a National Science Foundation Graduate Research Fellow.

Kaitlyn's SWE involvement began in 2006 as an undergraduate. She has filled many roles within the Michigan Tech Collegiate Section, including Webmaster, Communications Director, and Evening with Industry Chair, as well as Section President in FY10 and FY11. She remains active in the section, which has doubled in size over the last three years. She has also been a member of SWE's Collegiate Leadership Coaching Committee, providing coaching and support for collegiate sections. Kaitlyn is currently serving as Collegiate Director on the SWE Board of Directors for FY13.

Elizabeth Gregory is a PhD candidate in Aerospace Engineering at Iowa State University.

Heather Wiest is a second year graduate student at Purdue University. She is studying Aerospace Engineering, focusing in propulsion. Heather is a 2011 graduate of Rose-Hulman Institute of Technology, where she received a dual degree in Mechanical Engineering and Economics. While being an active member in SWE at Rose-Hulman, she served as section Treasurer her senior year. Heather has continued her involvement in SWE by becoming a member of the Collegiate Leadership Coaching Committee in 2011 and now serves as Team Lead for Region H.

Yang Yang is a second year chemical engineering graduate student. Her undergraduate institution was the University of Virginia. Her home is located in McLean, VA and she enjoys art and outdoor activities.

Other Career Options for Engineers

Katie Boor

STSS 114

Not all engineers work on a plant or in a research lab. Learn about non-traditional career paths open to engineers.

Biography:

Katie Boor is a Program Manager for New Product Development at Ingersoll Rand in Minneapolis, MN. She graduated with a Bachelor of Science in Mechanical Engineering from Purdue University. Katie began her career with Ingersoll Rand in June 2004 in the Accelerated Development Program and since has had multiple roles in operations, project management, quality and operational excellence. These roles have enabled her to move around the country, living in Pennsylvania, North Carolina, Georgia and Minnesota since graduating from college.

C ollegiate S ession | 10:30 - 11:20 AM

Ingersoll Rand is uniquely qualified to create and sustain safe, comfortable and efficient environments. Our people and our market leading brands, including Club Car®, Ingersoll Rand®, Schlage®, Thermo King®, and Trane®, work together to inspire progress for our customers. For more information about Ingersoll Rand visit www.ingersollrand.com.

What Should I Take Away From my Internship/Research Experience?

*Laura Lennartson, Jessica Breault
STSS 432A*

You landed an internship or research position, what should you make sure you do before it is over? Discover what you should take away from the experience and how you can build bridges to keep contacts for future networking.

Biographies:

Laura Lennartson is from Woodbury, Minnesota and was a SWE member throughout

college. She graduated from the University of Minnesota in 2011 with a BS in Chemical Engineering. She now works in P&G Fabric Care making Tide Pods laundry detergent.

Jessica Breault is from Andover, Minnesota and graduated from the University of Minnesota in 2011 with a BS in Chemical Engineering. She was always a very active member of SWE and held the Secretary position her senior year. She now works for P&G in the Fabric Care group on laundry detergent and fabric softener packaging (Tide, Gain, Cheer, Era, Downy, etc).

Where Do I Go Now: Graduate School or Industry?

*Victoria Chemistruck, Anne Lucietto, Diane Peters, Colleen Witzenburg
STSS 131A*

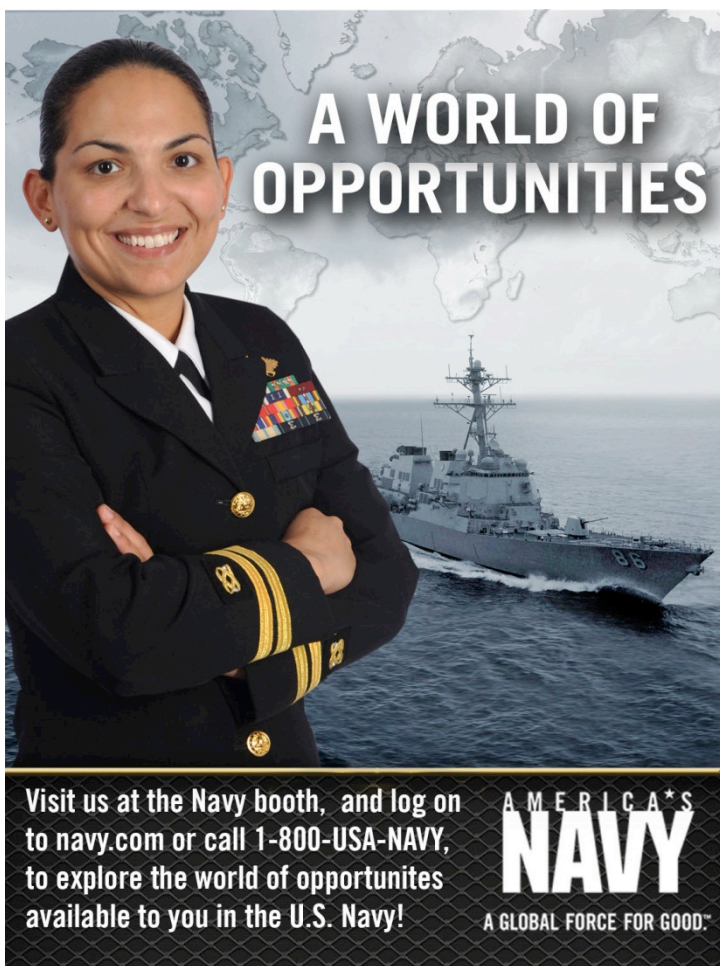
The advantages and disadvantages of choosing graduate school or the industry are explored in this exciting session. Discuss your options after graduation with a panel of varied experience.

Biographies:

Victoria Chemistruck is a PhD Candidate and National Science Foundation Graduate Research Fellow studying organic electronics in the Departments of Chemistry, Chemical Engineering, and Materials Science at the University of Minnesota.

Anne Lucietto, MBA, F. SWE is a GRA at Purdue University. She worked 26 years in industry and government and has 27 years experience as an adjunct in various community colleges. Currently she is pursuing a PhD in Engineering Education at Purdue University.

Diane Peters graduated from the University of Notre Dame in 1993 and went directly into an industry job designing machinery. Several years later, she began attending graduate school part time and received a master's



A WORLD OF OPPORTUNITIES

Visit us at the Navy booth, and log on to navy.com or call 1-800-USA-NAVY, to explore the world of opportunities available to you in the U.S. Navy!

A M E R I C A ' S
NAVY
A GLOBAL FORCE FOR GOOD.™



C Collegiate S Session | 10:30 - 11:20 AM

degree in Mechanical Engineering from the University of Illinois at Chicago; later in her career, she left the workforce temporarily to earn a PhD from the University of Michigan. She is now a Senior Control Systems Engineer for LMS North America.

Colleen Witzenburg is a PhD candidate working in the Barocas Research Group at the University of Minnesota. Her research focuses on evaluating the mechanical and structural properties of cardiac tissues.

Who Is In My Network and How Can They Help Me?

Amanda Nurse

STSS 121

Your network does not consist only of your employers and previous professors. Learn how you can strengthen and diversify your network by utilizing your personal relationships. Learn

how to develop a “personal board of directors” within your network.

Biography:

Amanda Nurse is a Maintenance and Reliability Engineer at the BP Whiting Refinery just outside Chicago. She holds degrees in Civil and Architectural Engineering from the University of Miami. In her current role she resolves maintenance and operational issues related to equipment reliability, unit availability, and mechanical integrity at a 400,000 bbl/day oil refinery. She continues to grow and leverage her network since her time at Miami. She enjoys running, biking, golfing, and traveling.



 **Medtronic**

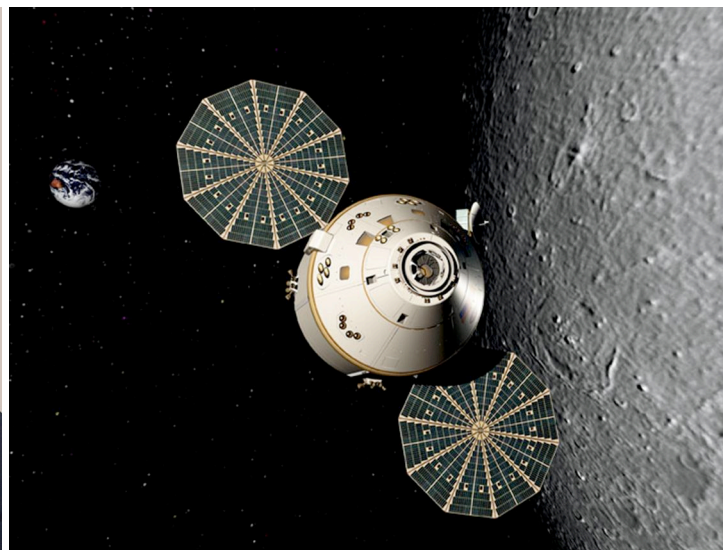
Inspiring Possibilities

To learn more about career opportunities at Medtronic, visit www.medtronic.com/careers.

Medtronic is an equal opportunity/affirmative action employer committed to cultural diversity in the workforce.

Innovating for life.

UC201304376 EN © 2013 Medtronic, Inc. All Rights Reserved.



ATK is proud to support the Society of Women Engineers. At ATK, we believe that **our people** are **our most important asset** and our greatest competitive advantage. To learn more about how **you can make a difference** in the Aerospace, Defense and Sporting industry, check out www.atk.com/careers.



Session One | 11:35 AM - 12:25 PM

Being a Professional

David Leard

STSS 114

There is a time and place for everything. Learn about how and when to be a professional.

Biography:

David Leard has a BS in Environmental Engineering from Penn State University and a MS in Engineering Management from the Missouri University of Science and Technology. He is currently a Senior Military Science Instructor with the University of Minnesota Army ROTC Department. He is a retired Army Reserve Engineer Officer. He has held several civilian engineer positions as well as having served in several leadership and staff positions in Army Engineer commands on multiple deployments worldwide.

Engineering the Mall of America: No Heat in February?

Sara Schmidt

STSS 230

With more than 520 stores and an entire amusement park, the Mall of America is a large tourist attraction. Learn more about how the 20-year-old building first began, how it “lives green” 365 days a year, and how it remains to be one of the nation’s top tourist destinations.

Biography:

Sara Schmidt, a public relations coordinator

at Mall of America, is responsible for pitching stories locally, writing media advisories and press releases and helping to coordinate segments for Sara Rogers, Mall of America trend specialist. Additionally, Schmidt assists with crisis communication, promoting special events, new products and celebrity appearances. The public relations department at Mall of America gains more than \$200 million annually in media coverage.

How to Live a Life of Nutrition and Wellness

Jenna Brott, RD

STSS 312

What you eat is important to how you function on a daily basis. Learn more about nutrition and the foods that will help you be ready to get through the day.

Biography:

Jenna Brott has been the Health & Wellness Coordinator for University Dining Services at the University of Minnesota since 2010. Prior to her current position, Jenna has had experience in clinical dietetics and food service management in long term care. Jenna received her Bachelor of Science in Food, Nutrition & Dietetics at Concordia College in Moorhead, MN and completed her dietetic internship at the Minneapolis VA Hospital.

Maintaining Membership

Kimberly Miller

STSS 123

All sections are different, and membership is more difficult in different settings. Explore different ways to be a successful section and encouraging all ages to become members.

Biography:

Kimberly Miller works in Research and Development for General Mills. She graduated in May with a degree in Chemical Engineering from the University of Wisconsin-Madison. While in school, Kim was an active member of her SWE section and served in

Be part of something bigger.

We invite you to explore opportunities at GE in engineering, finance, manufacturing, sales and marketing, human resources, or information technology.

ge.com/swe



imagination at work

GE is an equal-opportunity employer.



Session One | 11:35 AM - 12:25 PM

various positions, including section president. She has continued her involvement in SWE by becoming a member of the Region H Collegiate Leadership Coaching Committee this year.

Marketing your Non-Engineering Skills

Kristen Seashore

STSS 220

A common engineering stereotype is that “engineers can’t talk to people,” and unfortunately for us, this is often based in truth. However, in today’s world, science and engineering fields are not only about numbers and figures. How well an employee communicates with and treats co-workers, managers, and others is just as important as technical expertise. This session will share some tips and tricks for improving your “soft skills” and provide ways to market these to employers who are looking for the whole package.

Biography:

Kristen Seashore has been actively involved with SWE since she was a freshman at UW-Madison, holding officer positions such as

Girl Scout Co-Chair and Grad Affairs Chair. She is currently the Vice President of the SWE Wisconsin Professional Section.

After graduating from UW-Madison with an MS in Biomedical Engineering, she joined GE Healthcare’s Anesthesia business in Madison, WI. She currently works as a Verification & Validation Engineer on new anesthesia systems. She has received training through work and other activities on presenting, interviewing and technical writing.

Media and Publicity

Faith Kurily, Lesley Wyckoff

STSS 121

With social media sites growing, learn different proactive ways to inform your members about meetings and events. This session is recommended for current and interested section secretaries.

Biographies:

Faith Kurily has been involved in SWE since 2000 when she joined as a collegiate member. She currently serves SWE locally on the executive board of SWE-Detroit as the Event

Around here, Innovation just comes naturally.

**Our Brands.
Your Legacy.**

generalmillscareers.com



The environment at General Mills is exciting, invigorating, and of course, innovative. Our company is filled with icons, legends and all kinds of interesting characters. Is it working? We made Forbes' list of the World's Most Innovative Companies, we were named one of the Top 50 Companies for Diversity® by DiversityInc, and we have consistently been included on the prestigious 100 Best Companies to Work For as well as the World's Most Admired Companies by Fortune magazine. For over 100 years, we've encouraged new thinking and new ideas. As a result our brands are some of the world's most beloved. It's time to work with great brands and build your own legacy in the process. It's time for General Mills.



GENERAL MILLS



Session One | 11:35 AM - 12:25 PM

Planner. Faith also has participated on the SWE National Awards Committee, and has been a Region H Leadership Coach since 2010 and currently serves as the lead Region H Coach. She obtained her Bachelor of Science in Mechanical Engineering from Wayne State University in Detroit, MI, and a Master of Science in Mechanical Engineering from the University of Michigan. She currently works as a Mechanical Engineer for the US Government. In her free time she enjoys running, biking, cooking, baking, traveling, and playing with her two cats.

Lesley Wyckoff is a Project Manager working for Stratasys in Eden Prairie, MN for six years. Lesley obtained her BS in Mechanical Engineering from the University of St. Thomas in St. Paul, MN. She is currently serving as a SWE Leadership Coach and the newsletter editor for SWE-Minnesota.

Mentoring: The Importance of Relationships

Andrea Swenson, Laura Zabell
STSS 131B

Being a mentor or a mentee is important for both parties. Learn more about the benefits of being a mentor or a mentee.

Biographies:

Andrea Swenson has a Bachelor of Science in Chemical Engineering from University of MN and seven years of experience with Cargill in process engineering, production management and project engineering.

Laura Zabell is a mom of two girls. She is a graduate of the University of Minnesota in Chemical Engineering. Zabell has worked at Cargill for five years and counting in roles as a Project Engineer, Mill Supervisor, and Process Development Group Specialist.

Out Of Overwhelm: Stress Relief with EFT Meridian Tapping

Laurie Phillips
STSS 118

You have so many claims on your time and energy at work and school, at home and in your communities that it's tough taking care of yourself. Being overwhelmed and stressed takes a major toll on your health and your relationships. EFT is often called "psychological acupuncture." Using simple phrases and gentle tapping on the same meridian points that acupuncture uses EFT releases stress, which can improve your self-esteem, physical health and your relationships with others. EFT is easy to learn and use on your own, so you'll be walking away with a tool you can put to work right away.

Biography:

Laurie Phillips is a crisis management coach for women who feel overwhelmed. She helps them move from crisis to confidence in their job, their health, and their relationships. She's a workshop leader with clients like Penny George Institute at Abbott Northwestern Hospital, Adler School of Coaching, State of Minnesota Work Force Center, Woman's Club of Minneapolis, Minnesota Women Lawyers,



careers.slb.com

85 years of innovation

>110,000 employees
>140 nationalities
~80 countries of operation

Who are we?
We are the world's largest oilfield services company! Working globally—often in remote and challenging locations—we invent, design, engineer, and apply technology to help our customers find and produce oil and gas safely.

Who are we looking for?
We need more than 5,000 graduates to begin dynamic careers in the following domains:

- Engineering, Research and Operations
- Geoscience and Petrotechnical
- Commercial and Business
- Field Specialists, Maintenance Technicians and Electronics Technicians

What will you be?
Schlumberger

Based on Forbes 2009 Global Companies report, 2011.
© 2011 Schlumberger



Session One | 11:35 AM - 12:25 PM

and Struthers Parkinson's Center. Laurie lives in Saint Paul with her husband, Jon, and three cats who are incredibly naughty.

Rotational Programs: Pros/Cons and How to be Successful

Su Rankin

STSS 131A

Some companies offer rotational programs. Learn what they are and how they can benefit you.

Biography:

Su Rankin is the Vice President of Supply Chain Manufacturing for North America at Ecolab, and has held this role since September 2010. Prior to this, she worked at SC Johnson, and held a variety of roles, beginning as a Manufacturing Support Manager, and ending her time there as a Director of Talent Development. Su holds a Bachelor of Science Degree from the University of Wisconsin Madison in Agricultural Science and Business and Industry. She is married and is the mother of high school and college aged boys.

STEM: What it is and How I can Help

Renee Becker

STSS 144

Science, Technology, Engineering, and Mathematics (STEM) are subjects that are crucial to the success of any organization. Learn how to define and develop the STEM skills you have and discover ways those skills can benefit your future career and community!

Biography:

Renee Becker has been a strong supporter of the FIRST Robotics Program for a number of years. The FIRST program encourages students ages K-12 to get involved with Science, Technology, Engineering, and Mathematics (STEM) and teaches them important STEM based skills. As a freshman at the UMN-TC Renee founded a College of Science and Engineering (CSE) student group, called GOFIRST, to help support FIRST high school teams in the Twin Cities. Renee earned a Bachelor of Science in Scientific and Technical Communications at the University of MN – Twin Cities. She is now works with the US FIRST Robotics Program as the FIRST Senior Mentor of Minnesota.

ROSEMOUNT

EMERSON
Process Management



Emerson Process Management Rosemount

Rosemount, Inc is a world-class designer and manufacturer of precision measurement and control instrumentation. We are recognized for excellence in pressure, temperature, flow, and level process solutions. Job opportunities are now available at the Chanhassen and Eden Prairie, MN locations.

<https://jobs.emersonprocess.com>

Full-time Keyword Search- New Grad Engineering
Job ID Number- 1006257

Co-op Keyword Search- Engineering Co-op
Job ID Number 1006259

Now hiring in these positions:

- Customer Project Engineer
- Marketing Engineer
- Electrical Design Engineer
- Mechanical Design Engineer
- Inside Sales Representative
- Software Engineer
- Manufacturing Engineer

Rosemount, Inc. is an Equal Opportunity Employer

EMERSON. CONSIDER IT SOLVED.™

Session Two | 1:45 - 2:35 PM

Balancing Section Finances

Cathy Krier, Heather Wiest

STSS 420A

SWE sections host many events annually that are either sponsored or are paid for by the section. Discover important practices to organize your section's finances for current and interested section treasurers.

Biographies:

Cathy Krier, as SWE FY12 & 13 Leadership Coaching Committee (LCC) Chair, leverages her leadership experience from two different sections: SWE-WI (FY98 – FY00) and SWE-MN (FY00 - current) and as a coach within Region H for more than five years. Cathy holds a Biomedical Engineering degree from Milwaukee School of Engineering and an MBA. As a professional since 1992, Cathy has had increasing responsibilities in technical and business roles, promoting and supporting the field of engineering to make better healthcare products possible. In 2007, she was a recipient for the SWE Emerging Leader Award for "demonstrated leadership in quality."

For Heather Wiest's biography, please see the collegiate session "Grad School – Finding Funding."

Green Engineering – The Future

Jason Hill

STSS 220

The world is progressively becoming more aware of conserving natural resources and driving economical, green solutions to market. With this revolution, what does the integration of green engineering into existing fields mean for the future? How will environmental regulations change how business is done today? This exciting session provides insight into the future of bioengineering and the basics of being environmentally friendly.

Biography:

Jason Hill is McKnight Land-Grant Professor of Bioproducts and Biosystems Engineering at the University of Minnesota.

Going Back For an MBA: Is It Worth It?

Melissa Stiegler

STSS 312

Thinking about getting your MBA? Learn about the benefits from a company's perspective.

Biography:

Melissa Stiegler is a Marketing Manager at Emerson Process Management in Chanhassen, MN. She has been at Rosemount for eight years starting as a design engineer. Melissa has a BS in Electrical Engineering from the University of Minnesota and an MBA from Carlson School of Management also at the University of

Minnesota. Melissa is currently working in the Rosemount Measurement Division as a product manager in the wireless group.

Harnessing the Mississippi River

John O. Anfinson

STSS 131B

Since the early settlers raised the first feeble levees, since the Corps of Engineers first placed the navigation structures in the Mississippi River and since biologists first seeded the river's floodplains with species

New year New financial start

Get a free financial review

Just come in for a few minutes. We'll go over your financial accounts and help you determine whether you are making the most of your money. Make an appointment today, and let us help you start planning for a more prosperous tomorrow.

Stop by a Wells Fargo location to talk with a banker today.

wellsfargo.com

© 2013 Wells Fargo Bank, N.A. All rights reserved. Member FDIC. (782636_07217)

WELLS
FARGO



Session Two | 1:45 - 2:35 PM

more amenable to human needs, the natural river has become increasingly an artifact. Each action has required reactions that define each subsequent move.

Regardless of its purpose, has each action raised a bar that now forms a hydraulic trap from which the river cannot escape? Are all our efforts at ecosystem restoration so constrained by what has been handed down that they have little chance of truly making a meaningful difference? In his presentation, Dr. John O. Anfinson will try to answer these questions and hint at where the Great River may be headed.

Biography:

John O. Anfinson is the Chief of Resource Management for the Mississippi National River and Recreation Area, a unit of the National Park System in the Twin Cities, Minnesota. John has been researching, writing and speaking about the Mississippi River for over 25 years. He is the author of *The River We Have Wrought: A History of the Upper Mississippi* (2003) and many articles about the Mississippi. In 2005 John was one of ten U.S. delegates to the joint U.S./Dutch symposium on water resources at The Hague, Netherlands, sponsored by the Institute for Water Resources and the Rijkswaterstaat. John recently had articles published in *Engineering Earth: the Impacts of Megaengineering* (University of Kentucky Press, 2011) and *The City, the River, the Bridge: Before and After the Bridge Collapse* (University of Minnesota Press, 2011).

John is a founding board member of Friends of the Mississippi River, an organization that focuses on the environmental health of the Mississippi in the Twin Cities metropolitan area. He is also on the Minnesota Marine Art Museum board.

John holds a PhD in American History from the University of Minnesota.

How Can SWE Help Me?

Alyson Borrell

STSS 144

New to the SWE community? Come learn what SWE is all about and the many opportunities that SWE has to offer.

Biography:

Alyson Borrell will be graduating from the University of Minnesota in May 2013 with a degree in Mechanical Engineering. She has been an active SWE member at the University of Minnesota since her freshman year. She has held leadership positions in the University of Minnesota section, and has continued her involvement in SWE by becoming a Region H Collegiate Leadership Coach.

Professional Style Tips to Look Your Best

Becky Fox

STSS 330

The way you present yourself to employers, co-workers and friends each day is very important in conveying your professionalism. Find out about different makeup and style tips to make the best first impression.



KLJ

KLJ is committed to improving the health, safety and welfare of our communities.

Join our team
kljeng.com

NATIONAL EXPERIENCE. REGIONAL EXPERTISE. TRUSTED ADVISOR.

Session Two | 1:45 - 2:35 PM

Biography:

Becky Fox has been a professional beauty consultant with Mary Kay for 20 years. She enjoys helping women look and feel their best by providing tips on skin care and color cosmetic application.

SWE Leadership Positions

Wendy Landwehr, Alyse R. Stofer, Erin Syverson, Holly Kimball
STSS 432A

There are many leadership opportunities available in each section as well as in Region H and throughout the Society. Learn more about the different leadership positions available to collegiate members, professionals and Members-at-Large (MALs) from a panel of current SWE section, region and Society leaders.

Biographies:

Wendy Landwehr is a longtime employee of Northrop Grumman Electronic Systems in Rolling Meadows, IL, where she is currently a Fellow Engineer. She has an MS degree in Computer Science from Illinois Institute of Technology. Wendy is a Fellow Life member of SWE, having been actively involved for the past 16 years. She has held a variety of positions at the local, regional and society levels, including Chicago Regional Section President, Society Procedures Committee Chair and Region H Governor. She is currently the FY13 Deputy Director of Regions.

Alyse R. Stofer has been active at all levels of SWE over her 18 years of membership. She has served as the Director of Regions, Director of Membership Initiatives and President-Elect on the Board of Directors, as well as multiple leadership roles in Region H and SWE-Minnesota including Region Governor and section president. In 2003 Alyse was SWE's New Face of Engineering and featured in USA Today. In 2006 she received the SWE Distinguished New Engineer Award and was also the recipient of the Minneosta Federation of Engineering, Science, and Technology Societies (MFESTS) Young Engineer of the Year Award. In 2011, she received SWE's Emerging Leader Award in product research, design, and engineering.

Alyse is an Engineering Program Manager at Medtronic, the global leader in medical technology devices. She is leading product development projects in the Neuromodulation business sector from concept to global commercialization. Prior to Medtronic, Alyse was employed at Transoma Medical where she was a program manager leading the continuation engineering and product improvement engineering teams. For much of her career, she contributed to and led technical design teams, and as a result is a co-inventor on seven pending patents and is a co-inventor on patent number 7,344,505, "*Barriers and methods for pressure measurement catheters*".

Alyse received her Bachelor's degree in Biomedical Engineering from the University of Iowa, her Master's degree in Biomaterials from the University of Minnesota, and a medical device certificate from the University of St. Thomas. She and her husband Kevin, a high school math teacher and coach, have a young son and daughter. She enjoys spending time outside with her children, as well as reading and baking. Much of her free time is spent cheering her children on at their baseball, soccer and hockey games.

Erin Syverson is currently a senior at the University of Minnesota – Twin Cities pursuing degrees in Biomedical Engineering and Physiology. Her previous SWE positions include Outreach Director, Secretary, and 2013 Region H Conference Bid Committee Co-Chair. Currently, she holds positions as the Region Collegiate Communications Editor for Region H, as well as the University of Minnesota Section President.

For Holly Kimball's biography, please see the Collegiate Session "Getting the "Edge": How to Open Doors at Corporations and Successfully Transition From Academia to Industry."

Succeeding in a Contingency Construction Environment

Lieutenant Elise Chapdelaine
STSS 121

Discuss methods of achieving goals while working project management, and/or leading





Session Two | 1:45 - 2:35 PM

a construction team while being one of the very few females in a contingency environment.

Biography:

Lieutenant Elise Chapdelaine grew up in West Tisbury, MA. She attended the United States Naval Academy in Annapolis, MD, and graduated in 2007 with a Bachelor of Science in Naval Architecture. She has worked at Public Works Office, Annapolis, at the Office in Charge of Construction, Camp Pendleton Marine Corps Base, and at Naval Mobile Construction Battalion THREE (NMCB3), Port Hueneme, CA. While at Camp Pendleton, she managed 12 projects valued at over \$45M to include three barracks renovations, a courtroom retrofit, a new headquarters and a sniper training facility. At NMCB3 she served as a Platoon Commander and, during a deployment to Afghanistan, as a Detachment Officer in Charge (OIC) and Future Operations Officer. As OIC, she oversaw 54 and 28 Seabees in the safe execution of two separate road projects which included base entry control point construction and checkpoint security upgrades. As the Future Operations Officer, she worked with Marine Corps, Army, and Air Force engineers to help appropriately assign operational tasking and planned and tracked over 55,000 man days of future work for the Battalion. She currently serves as the Western CEC Accessions Officer out of San Diego, CA. LT Chapdelaine is EIT and CON Level II certified and is a qualified Seabee Combat Warfare Officer.

Women in Management

Tanya Santers

STSS 230

Even though individual engineers are the core of any technical project or functional team, the success of the team is highly dependent on its leader or manager. Explore key aspects that comprise an exceptional technical leader and how you can apply these as a woman.

Biography:

Tanya Santers is the Director of Design Engineering for ATK Armament Systems, a world leader in developing and producing precision munitions, ammunition and gun systems.

Tanya has a BS and MS in Mechanical Engineering from the University of MN.

Work/Life Balance

Christi Nitse

STSS 114

Sometimes work may seem like the only thing on your mind the entire day. Hear about ways to prioritize and balance your family life with your work life in this session. Striking a balance between your personal life and your work life is a challenge for everyone. There is no one answer since each person is unique and has different demands on his/her time. The position of field engineers is very different from that of an office bound engineer. Also, someone who travels extensively has to deal with issues that a non-traveler does not face. Come listen to the experiences of someone whom has learned to balance the lifestyle of all these types of positions.

Biography:

Christi Nitse is the North American Field Engineer Recruiter at Schlumberger. She holds a BS from Carnegie Mellon University in Manufacturing Management. She has held traveling, office, and field positions in a variety of companies including Marc Global, IKEA, and M-I SWACO, a Schlumberger company. Within Schlumberger, she has been a supply chain analyst, a ProACT (Program for Accelerated Career Training) field engineer, and currently a recruiter. She has traveled extensively for projects and training around the US as well as Asia, Europe, and Latin America.

Session Three | 2:50 - 3:40 PM

Asserting Yourself in a Male-Dominated Profession

Dayna Johnson
STSS 312

Science and engineering companies are growing in the number of women employees, yet the majority of workers are still generally male. Discover how to best manage and work with the opposite sex in a male-dominated industry.

Biography:

Dayna Johnson is a Commercial Manager for GE Energy Management and has previously worked for eight years as a civil engineer in the water and waste water industry. She is active in SWE, currently serving as Lieutenant Governor of Region H. She has a BS in Civil Engineering and a Master of Engineering Management from Valparaiso University.

Be a Person of Influence

T.H. (Tracy) Suloway
STSS 230

Go beyond your typical career and make a difference. Learn more about how to influence the younger generation.

Biographies:

T.H. (Tracy) Suloway is the functional Manager of RF Systems Engineering, reporting to Ms. Shotwell (Baltimore). She has responsibility for the day to day department operations in Rolling Meadows, IL. Dr. Suloway works in concert with her counterpart in Baltimore to achieve strategic business results and to focus on team and individual performance. In addition, she has responsibility for working with program and proposal teams to promote the SEIT vision of innovation and affordability within the Non-Kinetics domain.

Tracy joined NGIS as part of the Future Technical Leaders (FTL) rotation program. She led multiple IRAD and successful proposal teams for NGIS, NGAS and NGES. Most recently she was lead SE for the Power and Signals Distribution Team at NGES Azusa, responsible for key activities associated with the build, test, qualification, and delivery of space qualified electronic boxes for the Space Based Infrared System (SBIRS) Program.



**YOU WANT TO BUILD A
MEANINGFUL CAREER.
WE PROVIDE THE TOOLS.**

Careers at Cargill

Cargill is a unique place to grow your career, your experience and your abilities. Every day, we grow our reputation as a leading international producer of food, agricultural, financial and industrial products and services. We take pride in our global reach, ability to contribute, and strong work ethics and values. Founded in 1865, Cargill is a privately held company and employs 140,000 people in 65 countries with annual revenues in excess of \$133 billion. Through innovation, creativity and teamwork, we are transforming entire markets and people's lives worldwide, and we can have the same impact on your career. Discover how we can be Better Together at www.cargill.com.

BETTER TOGETHER
www.cargill.com/careers

Cargill



Session Three | 2:50 - 3:40 PM

Dr. Suloway received a Bachelor of Science from University of Illinois at Champaign-Urbana and a Masters and PhD from California Institute of Technology.

Ins and Outs of Hosting a Regional Conference

Cathy Pieronek

STSS 121

Learn about the requirements for hosting a region conference, and the ins and outs of planning, from a member of the Region Conference Planning Team. Schools planning to bid for the conference for 2015 and reps from the 2014 winning school should plan to attend.

Biography:

Cathy Pieronek is Assistant Dean for Academic Affairs at the University of Notre Dame. She has been involved in planning Region H conferences since the 2005 conference at Notre Dame. She currently chairs SWE's Strategic Planning Committee and serves as the Title IX Lead for the Government Relations and Public Policy Committee. She is a past president of the Chicago Regional Section, and currently serves as faculty adviser and counselor to the University of Notre Dame collegiate section.

Maintaining the Metrodome: How Did It Cave In?

Steve Maki, PE

Home of the Minnesota Vikings, The Metrodome ceiling made of fiberglass fabric caved in from the weight of about 17 inches of snow on December, 12 2010 leaving the football team without a field to play on. How did the

ceiling cave in and how did it hold up through previous winters?

Biography:

Steve Maki, PE is the Director of Facilities and Engineering for the Metropolitan Sports Facilities Commission. He graduated from the University of Minnesota – Twin Cities with a BS in Mechanical Engineering and the



It doesn't matter where we're from.
IT MATTERS WHERE WE'RE GOING.

Although we represent many different backgrounds, we're working toward one common goal: global security. When you start your career with us, we'll support you through training and employee resource groups, which strengthen skills and understanding.

We have a long history of drawing strength from our differences. In fact, in 2012, *DiversityInc* named us one of the Top 50 Companies for Diversity—an honor we've proudly held since 2010, when we were the first defense company to make the list.



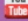
Across our career areas and around the globe, we see the value of our performance every day. We are Northrop Grumman. And freedom is **at the heart of what we do.**

Northrop Grumman is a proud Sponsor of the 2013 SWE Regional Conference.

For opportunities in Engineering, Computer Science, Software and Information Technology, and other career areas, visit careers.northropgrumman.com

©2012 Northrop Grumman Corporation. Northrop Grumman is committed to hiring and retaining a diverse workforce. We are an Equal Opportunity Employer, making decisions without regard to race, color, religion, sex, national origin, age, veteran status disability, or any other protected class. U.S. Citizenship is required for most positions.

Join our Talent Community

-  LIKE NorthropGrummanCareers
-  FOLLOW Northrop Grumman Corporation
-  FOLLOW @NG_Careers
-  SUBSCRIBE to our Channel: NorthropGrummanMedia

THE VALUE OF PERFORMANCE.

NORTHROP GRUMMAN

Session Three | 2:50 - 3:40 PM

University of Minnesota – Duluth with a Master's in Business Administration. He is a board member and past treasurer of the Stadium Managers Association.

Patents: An Engineer's Perspective

Melissa S. Hockersmith

STSS 131A

Patent protection is a critical part of protecting a company or individual's designs, products, and processes. Because of their role as creators of new technology, it is important for engineers to have a basic understanding of patent law. Learn about the importance of having a patent and the process of obtaining one, whether with a company or on your own.

Biography:

Melissa S. Hockersmith is a registered patent attorney whose practice focuses on all aspects of intellectual property law, including patent, trademark and copyright law, with an emphasis on intellectual property litigation. Melissa graduated from Arizona State University in 2001, earning a B.S.E. degree in Mechanical Engineering. While at Arizona State University, Melissa was actively involved in the Society of Women Engineers, chairing the Community Service Committee. In 2004, Melissa received her law degree from the University of Wisconsin Law School. Melissa has been with the law firm of Ryan Kromholz and Manion,

S.C. in Brookfield, Wisconsin since 2004. Melissa is a member and past president of the Wisconsin Intellectual Property Law Association and a member of the Society of Women Engineers and the Association for Women Lawyers.

Steps to Success for SWE Members after Graduation

Rossana Latham, Lesley Wyckoff

STSS 131B

There are many options available to graduating SWE members. Discover what the transition process entails for crossing from a collegiate to a professional member.

Biography:

Rossana Latham is a Software Engineer at Raytheon in Fort Wayne, IN since May of 2011. She obtained her Bachelor of Science in Computer Science from the Indiana-Purdue University of Fort Wayne. While at IPFW, her involvement in SWE began as a member volunteering for events carried out in campus and in the community. As a member, she promoted the integration of members from different science, math and technology areas, and served as Secretary and Section Treasurer. As a professional, Rossana continues her involvement with SWE as a member of the Collegiate Leadership Coaching Committee since June of 2011, and is currently the Section Representative for SWE North East Indiana.

For Lesley Wyckoff's biography, please see "Media and Publicity" from Session One.

Taking Charge of Your Success, Growth, and Career Development

Kirk Froggatt

STSS 220

In this workshop we will discuss seven keys to success in taking charge of our performance, growth and career development. Because



Shape the Future of Digital Storage

At Seagate, you'll join a worldwide team of talented people collaborating to redefine what digital storage is and what it can be. Seagate leads the industry in research and development, and our digital storage solutions allow people the freedom to access their content anytime, anywhere.

With over 50,000 employees in more than 22 countries across Asia-Pacific, North America and Europe, we have an innovative global culture that will challenge you and give you the opportunity to learn and develop. A variety of challenging Engineering positions are available in the Electrical, Mechanical, Firmware, Hardware, Servo, ASIC, Magnetics, and other engineering disciplines.

Go where innovation leads...apply today!
www.seagate.com/jobs





Session **T**hree | 2:50 - 3:40 PM

our past performance and track record are the best predictors of future performance, we will start by exploring several principles and practices to help us optimize contribution and results in our current roles. Next we'll discuss how we can expand our horizons and begin building bridges to new career opportunities. We'll end with an "insight to action" exercise to identify two focused actions you can begin tomorrow to enhance our individual success and satisfaction as well as our team contributions.

Biography:

Kirk Froggatt is a Sr. Fellow and holds the Gemini Chair in Technology Management within the University of Minnesota's Technological Leadership Institute. Prior to joining the U of M, Kirk held a variety of senior talent management and leadership and organization development roles in global technology organizations including:

- Vice President, Talent & Organization Development, Ecolab
- Vice President, Global Talent & Organization Development, Agilent Technologies
- Vice President, Global Human Resources, Yahoo!
- Vice President, Global Human Resources, Silicon Graphics Computer Systems
- Manager, Corporate Workforce Planning and Research, HP
- Manager, Training & Development, HP

Kirk has an undergraduate degree in Industrial/Organizational Psychology and completed his graduate studies in Organizational Behavior and Strategic Management at Purdue University's Krannert Graduate School of Management.

Yoga and Stretching for the Busy Woman

Emily Autumn

STSS 330

Everyone can use a break once and a while. Come practice some yoga and stretching to help relieve stress in busy lives.

Biography:

Emily Autumn has been a student of yoga since 1987. She has taught since 1994. She is certified in the Kripalu and White Lotus methods of yoga and has also been certified as a Phoenix Rising Yoga Therapist.

Session Four | 3:55 - 4:45 PM

35W Bridge Collapse: Summary of Investigation Conclusions

Samuel Pond, PE

STSS 330

On August 1, 2007, the 35W Bridge connecting the two banks of the University of Minnesota campus collapsed. This session explores what caused it to fail and what changes were made to the new bridge.

Biography:

Samuel Pond is a registered PE working at Enclos Corp as a structural engineer designing curtainwall and building facades. Samuel worked with the NTSB on the official collapse investigation while attending graduate school at the University of Minnesota.

Etiquette (Snack)

Jennifer Sciuлло

STSS 118

Spending time with colleagues over a snack or meal is a great way to develop your professional network. Learn about the rules of conduct that apply in any business dining situation while enjoying some snacks.

Biography:

Jennifer Sciuлло is a Systems Engineer at Northrup Grumman Corporation. She

graduated in 2005 with a degree in Electrical Engineering. Jennifer is active in SWE and a nationally recognized speaker. With an insane amount of interest in self-help books, volunteering her time as a wedding planner, and experience working with diverse teams while maintaining her southern hospitality, Jennifer provides enthusiastic and enlightening presentation with a sweet personal charm.

How to Organize Your Desk, Your Life, and Your Information

Sarah Kirkish

STSS 312

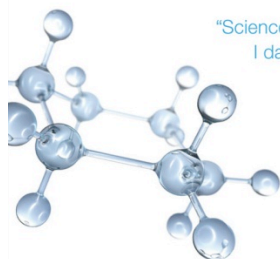
Feeling disorganized, frustrated and overwhelmed? Disorganization usually falls into one or more of the following three categories: time management, information management and space management. In this interactive session you will learn how to:

- Organize your life and prioritize your time using values-based goal setting
- Tame your inbox to counteract information overload
- Create a personalized workspace for your organization type

By investing in education for women and girls, we are engineering a viable source of energy.

When women and girls get the educational and professional support they need, we all benefit. That's why ExxonMobil supports a range of initiatives that improve educational and career opportunities for women, especially in science, technology, engineering and mathematics. For example, we're proud to partner with the Society of Women Engineers to introduce girls to the world of engineering and technology—and to provide mentoring and support once they get there. Helping women reach their potential is the best investment anyone can make toward creating a sustainable energy source.

The story continues at exxonmobil.com



"Science, technology, engineering and math are the building blocks of our future. I dared to dream the impossible, and through hard work I was able to make my dreams come true."

Tiffany Lai | Engineer

ExxonMobil

Taking on the world's toughest energy challenges.™



Session Four | 3:55 - 4:45 PM

Join us to find out the surprising truths of goal setting, use proven information processing techniques on your inbox and discover your personal organization type.

Biography:

Sarah Kirkish is the owner of Work Life Organization and a SWE Life Member. She helps busy professionals simplify their lives from the inside out with her down-to-earth coaching and interactive workshops.

She is a Certified Coach, Professional Organizer and SWE Leadership Coach with over 18 years of strategic goal setting and project management experience in corporate America. Sarah's motto is: "The Secret to Success is getting Started!" Follow her on Twitter: WorkLifeOrg or visit her website at: www.worklifeorganization.com

International Engineering

Martine McDonald

STSS 220

More and more companies globally are evolving into international conglomerates. Find out more about the opportunities available when working with or for a company that is spread globally.

Biography:

Martine McDonald, ExxonMobil Chemical Company – Graduated from University of Minnesota—Twin Cities in 2001 with a Bachelor of Chemical Engineering degree. At ExxonMobil, Martine has held a variety of assignments related to aromatics technology and operations. Martine currently supervises global aromatics process technology support in Baytown, TX.

Planning for Your Financial Future, What Every Woman Needs to Know

Helen Colvin

STSS 230

Protecting Yourself from Fraud Course
Objectives:

1. Raise awareness of exactly how your personal information can be stolen.
2. Learn how identity thieves operate.
3. Develop a plan to protect yourself from the theft of your identity.
4. Learn how to report fraud, identity theft and suspicious activity when it occurs.

Biography:

Helen Colvin works in software quality assurance for Wells Fargo. She has been a



UTC Aerospace Systems

UTC Aerospace Systems is one of the world's largest suppliers of technologically advanced aerospace and defense products.

We design, manufacture and service systems and components and provide integrated solutions for commercial, regional, business and military aircraft, helicopters, international space programs and other platforms.

UTC is a global company with 2011 annual sales of \$55.8 billion and approximately 200,000 employees worldwide.

We currently have numerous career opportunities including: software engineers, quality engineers, supply chain, project managers, system engineers, and more. Visit our website today at

www.utcaerospace.com

Session Four | 3:55 - 4:45 PM

member of SWE since 1999, when she joined the Iowa State University collegiate section while earning her Bachelors in Computer Engineering. She got involved with the Heart of Iowa professional section while earning her PhD in Human Computer Interaction at ISU, and has held most leadership roles within that section. Today

she is Section President of the Heart of Iowa section.

Resolving Conflicts

Anna Snow, Wendy Brostrom

STSS 114

Conflict is an inevitable part of the workplace. Learn how to best resolve conflict and how to use it to your advantage.

Biographies:

Anna Snow is a Sr. Engineer from General Mills who has worked in Operations and Research and Development in a variety of businesses. She currently supports Connected Innovation for snacking products.

Wendy Brostrom has been part of the General Mills Human Resources team for almost 15 years. Most recently she's been the Recruiting Manager for R&D and Quality and Regulatory Organization.

Elevate expectations. Shatter the status quo. Change the game at GM.



At GM, we've charged ourselves with one mission: to design, build and sell the world's best vehicles. And to achieve our goals, we're currently undergoing one of the largest Information Technology transformations in the history of the automotive industry.

We're increasing the number of students working on IT innovation globally, and we're inviting leaders and self-starters who want to make a difference to join us. If that sounds like you, we are currently hiring for the following areas:



Software Development • SAP • Infrastructure Design Security • Infotainment
Telecommunications • Data Engineering • Architecture • IT Operations

CHARGING FORWARD TOGETHER

Contact your Career Center for more information.

WWW.CAREERS.GM.COM/ITJOBS



GENERAL MOTORS COMPANY

SWE Counselors and Mentorship

Jenny Morikawa, Cathy Pieronek

STSS 121

SWE presents many opportunities for becoming a mentor to either a collegiate or professional member. If you are a SWE collegiate section counselor and advisor, or are interested in these roles, this session is for you. Learn what's required to be a mentor in these unique opportunities and discuss some best practices with other counselors and advisors to be effective.

Biographies:

Jenny Morikawa served as the counselor for the University of Michigan - Ann Arbor



Session Four | 3:55 - 4:45 PM

Collegiate section from 2002-2012. In 2007, she received the highest honor for SWE's Counselors: Outstanding SWE Counselor. She currently serves as the Region H Governor and has served SWE in many other roles including Region H Lt. Governor, Secretary, and President of the SWE Detroit Section, the Society Awards Committee, and Professional Development Grants Committee. She works for General Motors Company and is a Business Manager for Global/NA Vehicle Systems.

For Cathy Pieronek's biography, please see 'Ins and Outs of Hosting a Regional Conference' in Session Three.

SWE's Outreach Opportunities

Cassandra Svendsen

STSS 131A

SWE has many resources to plan outreach events to encourage and introduce young students about science and engineering. Learn about resources available and different outreach event ideas for your section.

Biography:

Cassandra Svendsen has been actively involved in SWE Outreach since 2005 in Minnesota. SWE offers a variety of tool kits that can be utilized with local sections to plan and execute outreach events and Cassandra is personally familiar with most of them.

Walk In Q&A Coaching

STSS 123

Do you wonder how other sections promote membership? Are you a new officer looking for training on SWE policies and procedures? Perhaps you need some fresh ideas for outreach and fundraising, or tips on how to complete an annual report. Join the Collegiate and Professional Leadership Coaching Committees (CLCC and LCC) for this informal walk-in coaching session to get all of your questions answered. At this seminar, Region H coaches will be available to answer questions about SWE and provide immediate coaching. Collegiate and professional leadership are encouraged to attend, even if you do not have a specific question. Also stop by if you are interested in joining either committee or learning more about what they do.



What will you discover?

At BP, we offer exciting and challenging opportunities for high performing students and recent graduates in engineering.

Discover BP
bp.com/uscampus



Networking **L**unch | 12:30 - 1:30 PM

Enjoy some delicious food while being productive and learning more about various companies in the Science Teaching and Student Services building!

<u>ROOM</u>	<u>COMPANIES</u>
114	Beckman Coulter, Boston Scientific, Kimberly Clark, Medtronic, Smiths Medical
118	Andersen Corporation, Emerson Process Management, MTS, Thomson Reuters
312	3M, Brady, Ecolab, General Electric, P&G
330	BP America, Cargill, Consumers Energy, Cummins, Halliburton, Schlumberger
412	Caterpillar, Chrysler, General Motors, MNDOT, UTC
131A	Aerotek, Ambitech Engineering Corporation, KLJ, SRF Consulting Group
131B	Army ROTC, ATK, General Dynamics, Navy, Northrop Grumman, Raytheon
432A	Ingersoll Rand
432B	Dell, Seagate, Wells Fargo
512A	Alcoa, HON Company and Allsteel, Philips Medisize, SEH
512B	General Mills, Hormel Foods, Iowa State University, TLI



**QUESTIONS?
CONCERNS?
DIRECTIONS?**

Please go to the **help desk** on the third floor of the **Science Teaching and Student Services building (STSS)**



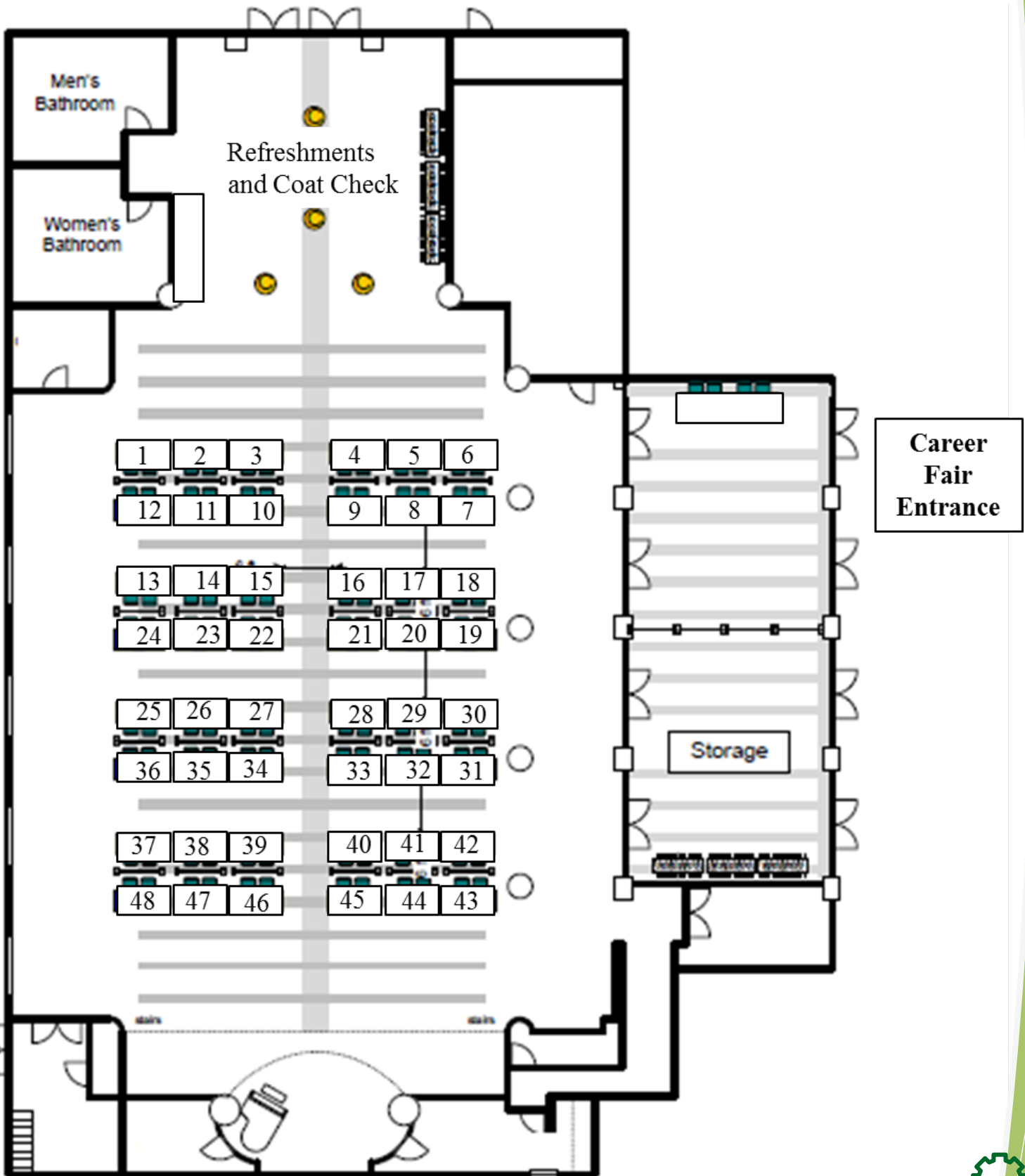


Career **F**air | 1:45 - 5:00 PM

Job or internship hunt and learn more about our sponsors in Coffman Memorial Union!

1. Ingersoll Rand
2. Caterpillar
3. Cargill
4. Exxon Mobil
5. Emerson Process Management
6. General Mills
7. General Motors
8. Northrop Grumman
9. Thomson Reuters
10. UTC Aerospace Systems
11. Army ROTC
12. ATK
13. Ecolab
14. General Electric
15. Hormel Foods
16. KLJ
17. America's Navy
18. Medtronic
19. P&G
20. Seagate
21. SEH
22. Wells Fargo
23. BP America
24. 3M
25. Cummins
26. Dell
27. General Dynamics
28. Hon and Allsteel
29. MTS
30. Schlumberger
31. Raytheon
32. Alcoa
33. Aerotek
- 34 and 35. Boston Scientific
36. SRF Consulting Group, Inc.
37. Ambitech
38. Andersen
39. Beckman Coulter
40. Technological Leadership Institute-
University of Minnesota
41. Chrysler
42. Consumers Energy
43. Iowa State University
44. Minnesota Department of Transportation
45. Phillips Medisize
46. Brady Corporation
47. Halliburton
48. Smiths Medical

Career Fair | 1:45 - 5:00 PM





Medtronic Factory Tour

Meet in the lobby of The Commons Hotel

2:55 PM on Friday, February 8th

(3 - 5 PM)

Tour the Medtronic Energy and Component Center (MECC). MECC is a vertically integrated supplier of energy systems and other components for Medtronic. This is one of Medtronic's three manufacturing sites in the Twin Cities. In addition to manufacturing capabilities, MECC also provides advanced research and development leadership to Medtronic for components that are strategically important to Medtronic's businesses including batteries, high-voltage capacitors, feedthroughs, electrodes, molding, and plasma processing. As a Medtronic Center of Excellence, MECC has the state of the art research, analytical, testing, and manufacturing facilities to bring these components from ideas and basic science to completed products. In this function for Medtronic, MECC supports the Medtronic Mission to improve the lives of people around the world through a focus on quality, reliability, service, and innovation.

Ecolab Research and Development Center

Meet on the 3rd floor of STSS near the entrance and lobby

1:40 PM on Saturday, February 9th

(1:45 - 3:55 pm PM)

This one hour overview tour is focused on highlighting Global RD&E capabilities. The tour is guided by a tour guide who provides all of the relevant facts related to Global RD&E. The tour route is modified to complete the tour within one hour and tours generally do not enter any laboratory areas. The purpose of the tour is to provide professional insights on Global RD&E to ensure guests appreciate the products, services and capabilities of Ecolab as an organization.

Civil Engineering Building

Meet on the 3rd floor of STSS near the entrance and lobby

2:35 PM on Saturday, February 9th

(2:40 - 4:30 PM)

The Civil Engineering building tour will be centered around the Materials Diagnostics of Damage and Defects (MD3) Lab in the Department of Civil Engineering. The centerpiece of the laboratory is a 3D Laser Scanning Doppler Vibrometer (SLDV); a system that allows 3D experimental reconstruction of vibrational and wave propagation fields in solids and structures. The system is capable of capturing extremely minute vibrations with amplitudes on the order of 100 picometers and frequencies that range from almost DC conditions to 1 MHz (ultrasonic range).



TCF Bank Stadium

Meet on the 3rd floor of STSS near the entrance and lobby
2:35 PM on Saturday, February 9th
(2:40 - 4:30 PM)

Get a behind the scenes look at TCF Bank Stadium. From the President's Suite to the largest locker room in sports, attendees will get to see the Golden Gopher Football's new home. Tour destinations include Goldy's Team store, DQ Club Room, Gopher Locker Room, Gopher Game Day Tunnel and Field, T. Denny Sanford Athletics Hall of Fame, Indoor Club, Gopher Media Room, and Presidential Suite.

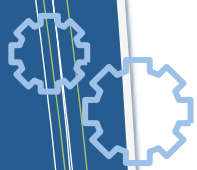
Visible Heart Laboratory

Meet on the 3rd floor of STSS near the entrance and lobby
2:35 PM on Saturday, February 9th
(2:40 - 4:30 PM)

Dr. Paul Iaizzo has been at the University of Minnesota since 1990, performing research and teaching graduate and undergraduate courses. In 1977, Dr. Iaizzo and his coworkers began working on large mammalian isolated heart models, and thus the Visible Heart Laboratory was created in collaboration with Medtronic, Inc. Today, this lab is a premiere place to perform translational systems physiology research which ranges from cellular and tissue studies to organ and whole body investigations.

The lab also hosts a library including more than 200 human hearts deemed not viable for transplantation. These hearts can be used by individuals and companies interested in learning more about cardiac anatomy. The hearts are also used for images and video clips which allow viewers to visualize the beating human heart, all the valves and ventricles, and the architecture of the heart as it beats. The Visible Heart Lab embodies a creative atmosphere which is energized by some of the best and brightest students at the University. The lab staff has over 100 years of collective research experience and functions as a highly efficient and productive team.

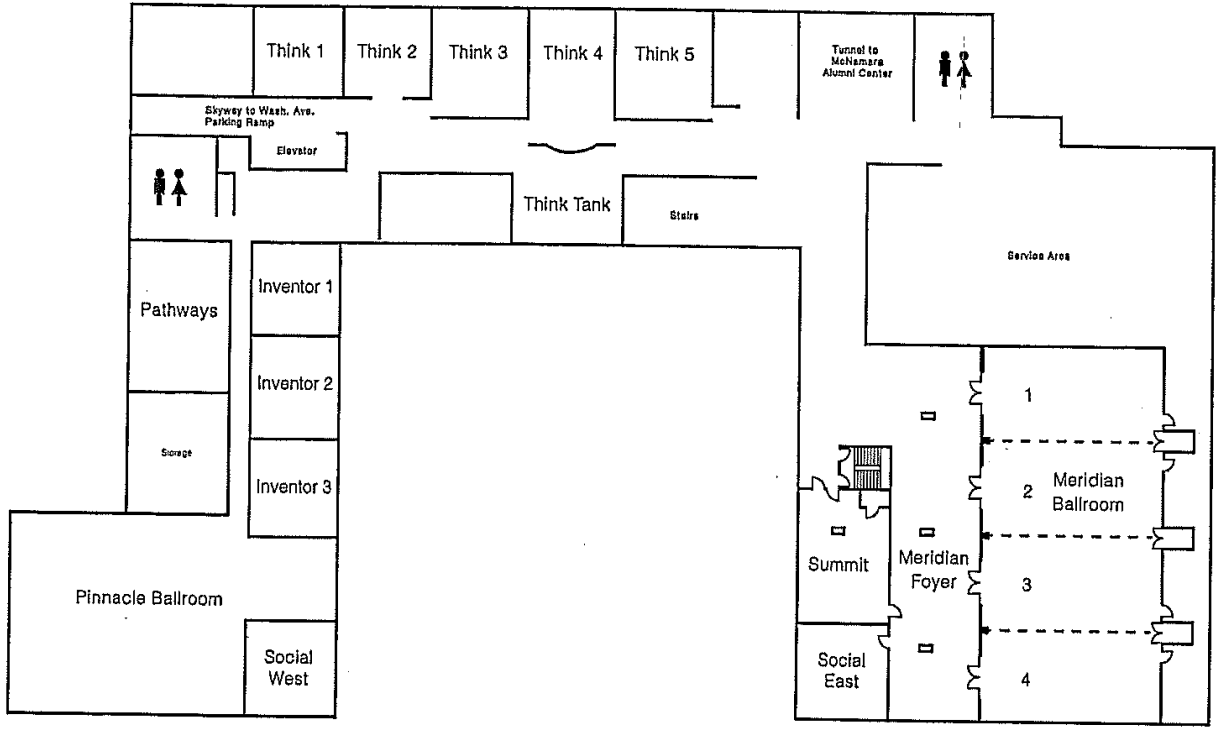




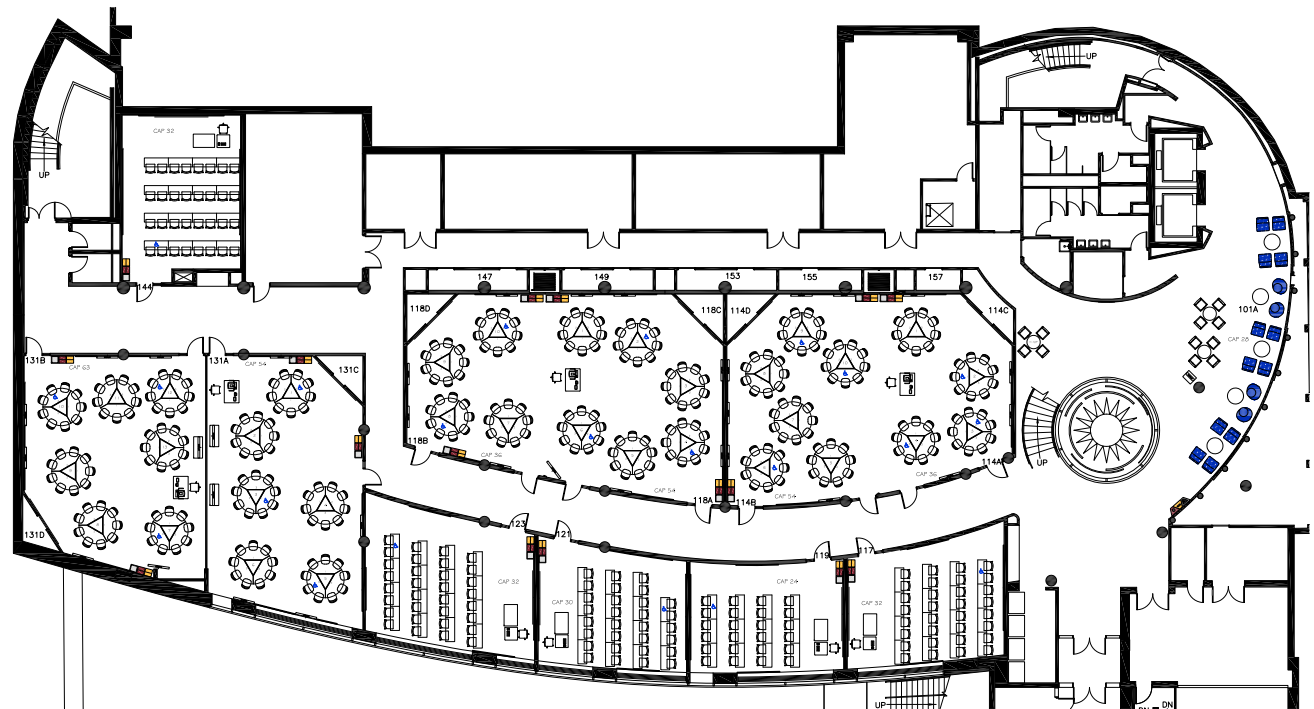
Mmaps

Second Floor - The Commons Hotel

MEZZANINE LEVEL



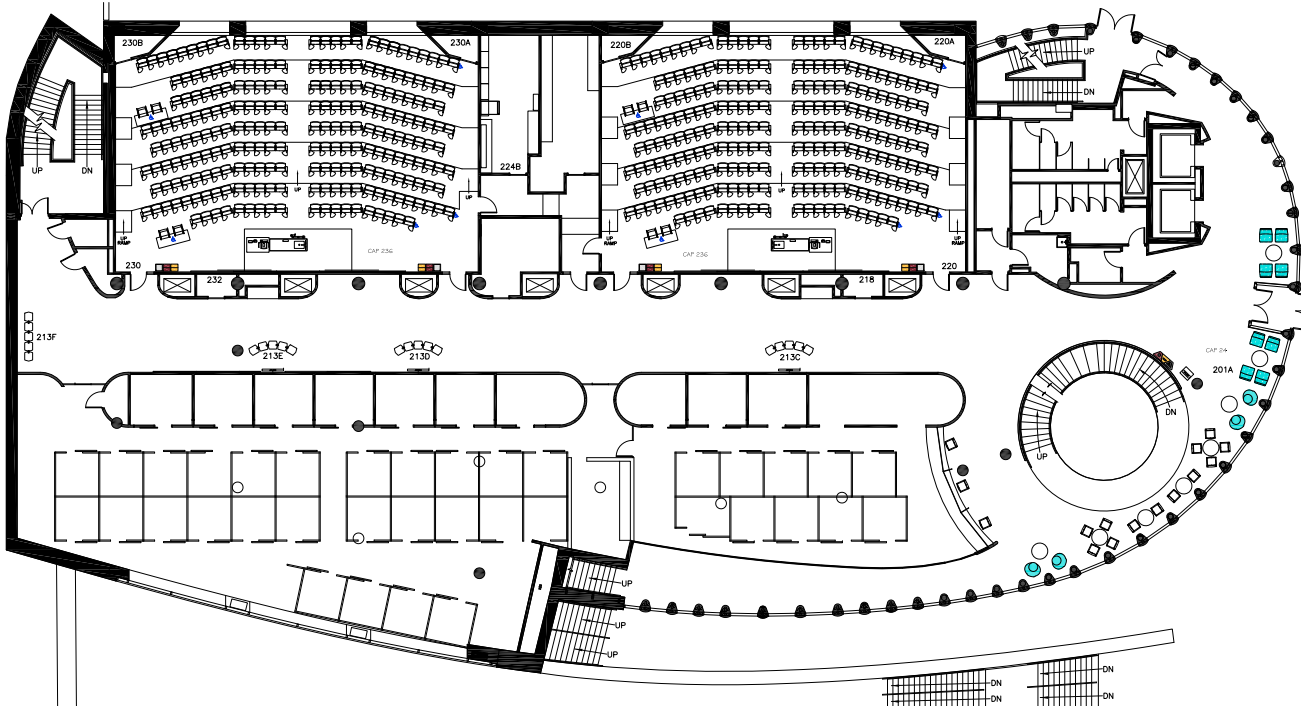
First Floor - STSS



SCIENCE TEACHING & STUDENT SERVICES, FIRST FLOOR
SCALE: NTS

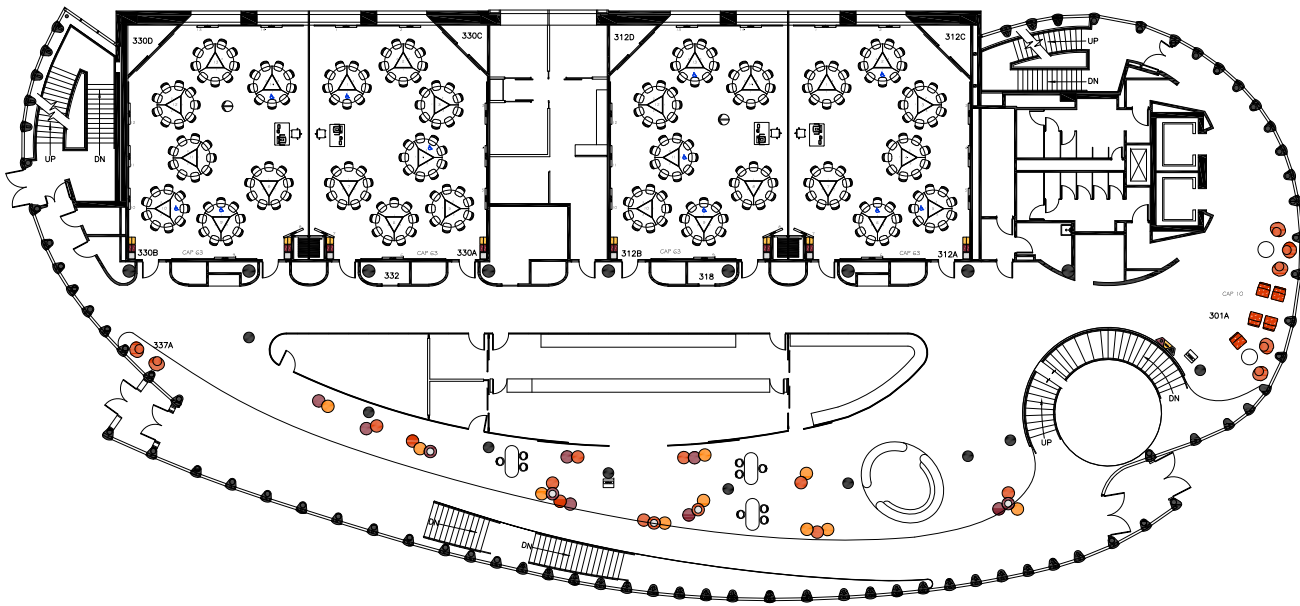


Second Floor - STSS



SCIENCE TEACHING & STUDENT SERVICES, SECOND FLOOR
SCALE: NTS

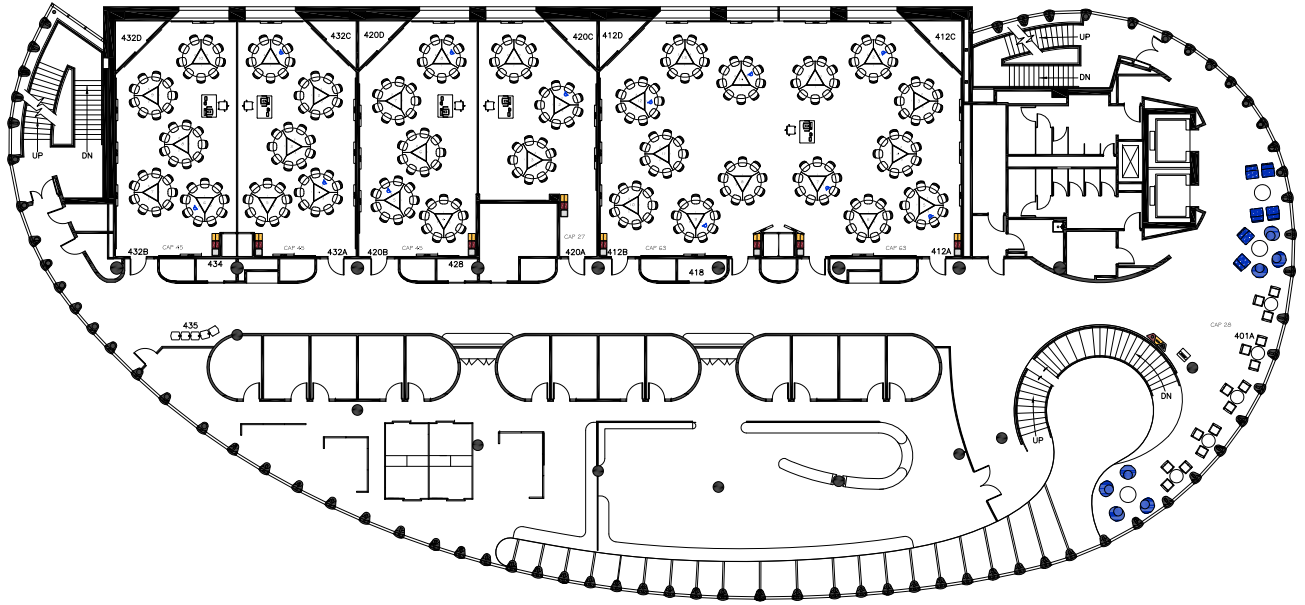
Third Floor - STSS



SCIENCE TEACHING & STUDENT SERVICES, THIRD FLOOR
SCALE: NTS



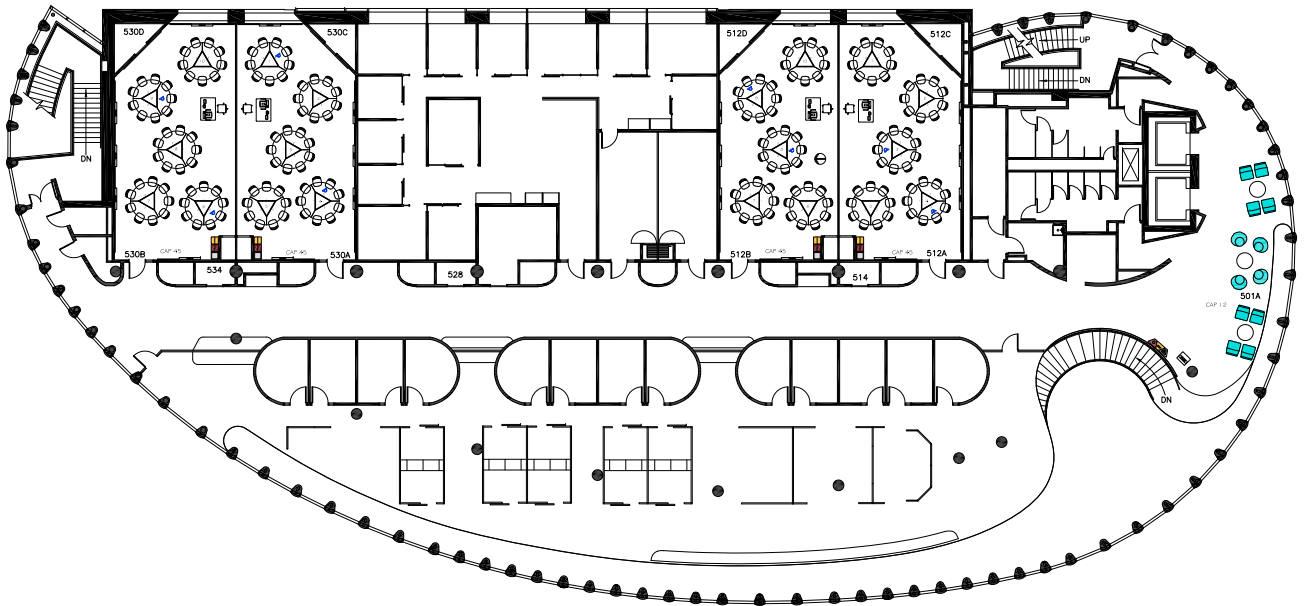
Fourth Floor - STSS



SCIENCE TEACHING & STUDENT SERVICES, FOURTH FLOOR
SCALE: NTS



Fifth Floor - STSS

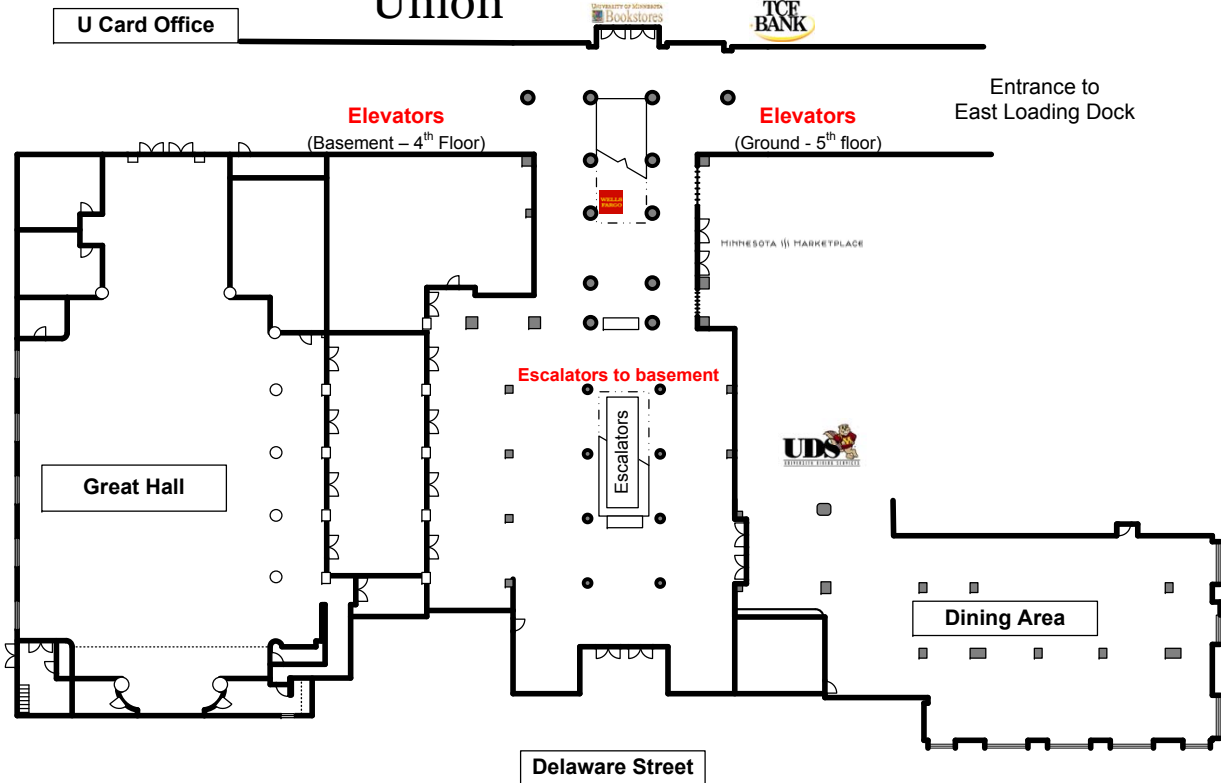


SCIENCE TEACHING & STUDENT SERVICES, FIFTH FLOOR
SCALE: NTS



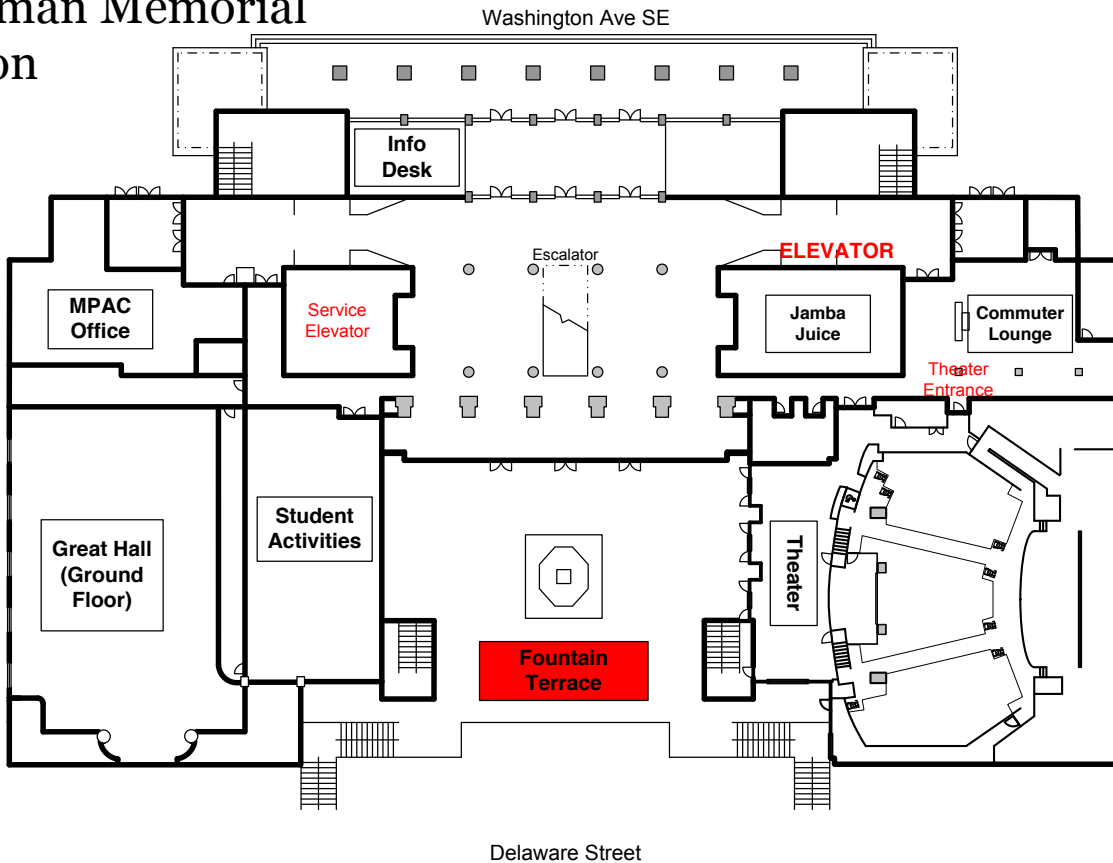
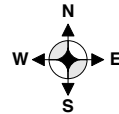
Coffman Memorial Union:
Ground Floor
(Central/South)

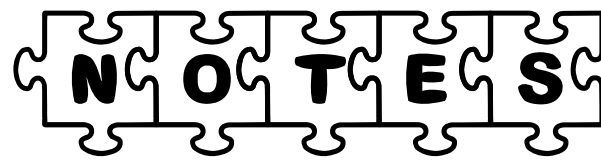
Ground Floor - Coffman Memorial Union



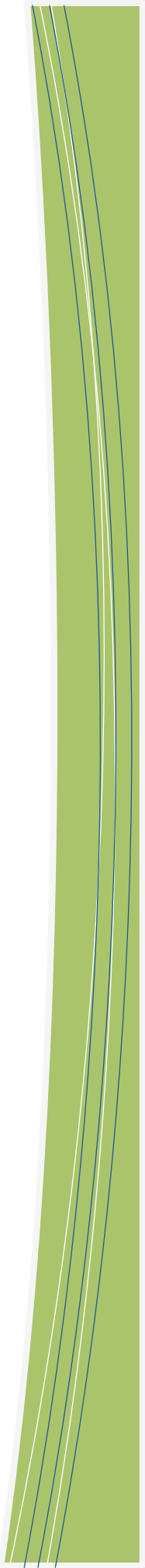
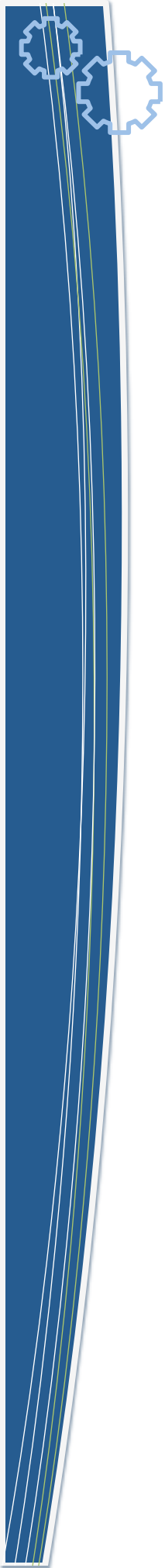
First Floor - Coffman Memorial Union

Coffman Memorial Union First Floor





NOTES



Our Sponsors



KEYNOTE SPONSOR



GOLD SPONSORS



SILVER SPONSORS



BRONZE SPONSORS



CAREER FAIR SPONSORS

Aerotek
Alcoa
Ambitech Engineering Corporation
Andersen Windows
Beckman Coulter

Bemis Company
Brady Corporation
Chrysler
Consumers Energy
Halliburton
Iowa State University

Minnesota Department of Transportation
Phillips Medisize
Smiths Medical
Technological Leadership Institute